



Multipurpose Copy Paper Pricing

Prices Valid through December 31, 2018

Georgia Pacific Multi-Use, Virgin Paper

20#, 92 bright white sheet. Suitable for use on high and low speed printers/copiers, laser and offset.

Discontinued, Subject to Quantity on Hand



KCDA No	Size	U/M	1-39	40+
17810	8-1/2"x11"	10/Case	\$32.82	\$32.29

Orca, Virgin Fiber

20#, 92 bright white sheet. Ideal for everyday copying and printing. Acid-free and inkjet ready, this paper is great for printers and copiers. Made in the Pacific Northwest.



KCDA No.	Size	U/M	1-39	40+
17808	8-1/2"x11"	10/Case	\$34.49	\$33.99

Natural Choice

20#, 92 bright white sheet, this paper is made with thermo-mechanical pulp, high opacity makes it easy to use both sides without affecting readability. Ideal for laser and inkjet printers and copiers.



KCDA No.	Size	U/M	1-39	40+
17803	8-1/2"x11"	10/Case	\$30.90	\$30.49
17807	8-1/2"x11" - 30% Recycle PCW	10/Case	\$34.30	\$33.85

Georgia Pacific Spectrum 100, 100% Recycled PCW

20#, 92 bright white sheet. Perfect for use in high speed copiers, laser printers, plain paper fax, inkjet printers, offset presses. Neutral pH, acid free content.



Discontinued, Subject to Quantity on Hand

KCDA No	Size	U/M	1-39	40+
17739A	8-1/2"x11"	Ream	\$4.75	\$4.68

Georgia Pacific, Virgin Fiber

20#, 92 bright white sheet. Suitable for use on high and low speed printers/copiers, laser and offset.



Discontinued, Subject to Quantity on Hand

KCDA No.	Size	U/M	1-39	40+
17823	8-1/2"x14"	Ream	\$4.74	\$4.61

Please Note: Contracts are bid and awarded throughout the year, pricing on this flyer are subject to change without notice. Current pricing and additional products are listed on Supply Link, login at www.kcda.org.

Xerox, Virgin Fiber

20#, 92 bright white sheet. Suitable for use on high and low speed printers/copiers, laser and offset.



KCDA No.	Size	Mfg. No.	U/M	1-39	40+
17600	8-1/2"x11"	3R2047	10/Case	\$42.71	\$42.12
17828	3 Hole Punched, 8-1/2"x11"	3R2641	Ream	\$4.27	\$4.21
17829	8-1/2"x14"	3R2051	Ream	\$5.87	\$5.78
17627	11"x17"	3R3761	Ream	\$9.21	\$9.08

Xerox, Virgin Fiber

24#, 92 bright white sheet. Suitable for use on high and low speed printers/copiers, laser and offset.



KCDA No.	Size	Mfg. No.	U/M	1-39	40+
17862	8-1/2"x11"	3R2531	Ream	\$5.92	\$5.84
17865	3 Hole Punched, 8-1/2"x11"	3R3317	Ream	\$5.74	\$5.62
17866	11"x17"	3R3871	Ream	\$12.57	\$12.39

Xerox, 30% Recycled PCW



20#, 92 bright white sheet. Suitable for use on high and low speed printers/copiers, laser and offset.



KCDA No.	Size	U/M	1-39	40+
17781	8-1/2"x11"	10/Case	\$48.27	\$47.68
17785	3 Hole Punched, 8-1/2"x11"	Ream	\$4.66	\$4.60
17783	8-1/2"x14"	Ream	\$6.58	\$6.49
17784	11"x17"	Ream	\$11.20	\$11.04

Boise Polaris, Virgin Fiber

20# & 24#, 97 bright white sheet. Suitable for use on high and low speed printers/copiers, laser and offset. Ideal for general business documents, reports and proposals, FSC chain of custody certified.



KCDA No.	Size	Weight	U/M	1-39	40+
69414	8-1/2"x11"	20#	10/Case	\$41.75	\$41.15
69415	11"x17"	20#	Ream	\$9.00	\$8.87
69417	8-1/2"x11"	24#	Ream	\$5.21	\$5.13

Boise Splox, Virgin Fiber

20#, 92 bright white sheet. This paper is "bulk" packed (reamless) in an easy carry case. This is ideal for quick loading of a copier or press. Suitable for high speed copiers, plain paper fax machines and laser printers. Each case weighs approximately 25#, half the weight of a standard case of paper.



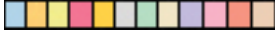
Note Quantity: 2500 sheets of paper = 5 reams per case.

KCDA No	Size	U/M	1-39	40+
17524	8-1/2"x11"	5/Case	\$20.30	\$20.01
17626	3 Hole Punched, 8-1/2"x11"	5/Case	\$22.67	\$22.34

For pricing on a truckload of paper, 840+ cases, please contact KCDA Customer Service.

Specialty Papers

Color Multipurpose Copy Paper, 30% Recycled PCW



17661 ...8.5"x11", Blue, 20#, 1/ream.....	\$5.17
17663 ...8.5"x11", Canary, 20#, 1/ream.....	\$5.17
17668 ...8.5"x11", Green, 20#, 1/ream.....	\$5.17

Colors Available: Blue, Buff, Canary, Cherry, Goldenrod, Gray, Green, Ivory, Lavender, Pink, Salmon and Tan.

Sizes Available: 8.5"x11", 8.5"x14" and 11"x17".

Weights Available: 20#

Astrobrights Color Paper, 24/60#, *30% Recycled PCW



12192 ...8.5"x11", Green, Terra, 1/ream.....	\$7.68
12395 ...8.5"x11", Orange, Cosmic, 1/ream.....	\$7.68
12196 ...8.5"x11", Red, Re-Entry, 1/ream.....	\$7.68

Colors Available: *Eclipse Black, *Celestial Blue, *Lunar Blue, Fireball Fuchsia, *Galaxy Gold, *Gamma Green, *Martian Green, Vulcan Green, Cosmic Orange, *Orbit Orange, Plasma Pink, Pulsar Pink, *Planetary Purple, *Re-Entry Red, Rocket Red, Terra Green, Terrestrial Teal, Venus Violet, *Stardust White With Speckles, Solar Yellow, Lift Off Lemon and *Sunburst Yellow.

Sizes Available: 8.5"x11", 8.5"x14" and 11"x17".

Weights Available: 24/60# and 65# Cover.

Domtar Hots Color Paper



13551 ...8.5"x11", Blue, 24/60#, 1/ream.....	\$8.83
13560 ...8.5"x11", Emerald, 24/60#, 1/ream.....	\$8.83
13549 ...8.5"x11", Fuchsia, 24/60#, 1/ream.....	\$8.83

Colors Available: Blue, Daffodil, Emerald, Fuchsia, Grape, Lime, Orange, Periwinkle, Red, and Lemon.

Sizes Available: 8.5"x11" and 11"x17".

Weights Available: 24/60# and 65# Cover.

Exact Brights Color Paper



13527 ...8.5"x11", Bright Green, 20/50#, 1/ream.....	\$6.04
13524 ...8.5"x11", Bright Orange, 20/50#, 1/ream.....	\$6.04
13526 ...8.5"x11", Bright Yellow, 20/50#, 1/ream.....	\$6.04

Colors Available: Bright Aqua, Bright Blue, Bright Gold, Bright Green, Bright Magenta, Bright Orange, Bright Pine, Bright Pink, Bright Purple, Bright Red/Coral, Bright Tangerine and Bright Yellow.

Weight Available: 20/50#.

Index Paper, Card Stock Cover



11241 ...8.5"x11", Canary, 90#, 250/pkg.....	\$5.58
10262 ...8.5"x11", White, 90#, 250/pkg.....	\$5.01
10267 ...8.5"x11", White, 110#, 250/pkg.....	\$6.45

Colors Available: Blue, Buff, Canary, Cherry, Gray, Green, Ivory, Salmon and White.

White Sizes Available: 8.5"x11" and 11"x17".

Weights Available: 90# and 110#.

Vellum Bristol Color Paper



10441 ...8.5"x11", Blue, 67#, 250/pkg.....	\$5.19
10442 ...8.5"x11", Canary, 67#, 250/pkg.....	\$5.19
10263 ...8.5"x11", White, 67#, 250/pkg.....	\$4.53

Colors Available: Blue, Canary, Cream, Gold, Goldenrod, Gray, Green, Ivory, Lavender, Peach, Pink, Tan and White.

Weight Available: 67#.

Craft Paper, Glazed/Textured



17552 ...36"x1000', Black, 50#, 1/roll.....	\$60.43
17550 ...36"x1000', Flame Red, 50#, 1/roll.....	\$68.52
17558 ...36"x1000', White, 50#, 1/roll.....	\$53.58

Colors Available: Black, Bright Blue, Aqua, Navy Blue, Royal Blue, Brown, Crimson, Autumn Gold, Gray, Bright Green, Emerald Green, Light Green, Orange, Pink, Purple, Flame Red, Yellow and White.

White Sizes Available: 18"x1100', 24"x1100' 30"x1100'and 36"x1100'.

Weight Available: 50#.

Butcher Paper, Glazed/Textured

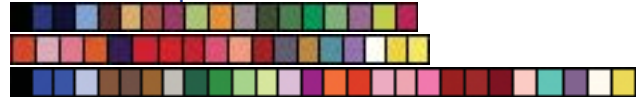


17385 ...48"x200', Dark Blue, 50#, 1/roll.....	\$15.95
17347 ...48"x200', Gray, 50#, 1/roll.....	\$19.92
17360 ...48"x200', Yellow, 50#, 1/roll.....	\$17.56

Colors Available: Black, Dark Blue, Light Blue, Brown, Gray, Emerald Green, Light Green, Orange, Pink, Flame Red, White and Yellow.

Weight Available: 50#.

Construction Paper



10091 ...9"x12", White, 76#, 100% Sulphite, 50/pkg.....	\$1.28
10133 ...12"x18", Black, 76#, 100% Sulphite, 50/pkg.....	\$2.85
10126 ...12"x18", White, 76#, 100% Sulphite, 50/pkg.....	\$2.46
11511 ...9"x12", Assorted, 65#, 100% Groundwood, 50/pkg.....	\$1.31
11427 ...9"x12", Black, 65#, 100% Groundwood, 50/pkg.....	\$1.08
11331 ...9"x12", Blue, 65#, 100% Groundwood, 50/pkg.....	\$1.00

Colors Available: Assorted, Black, Blue, Atomic Blue, Light Blue, Royal Blue, Sky Blue, Dark Brown, Light Brown, Warm Brown, Burgundy, Chartreuse, Gold, Gray, Dark Green, Festive Green, Holiday Green, Light Green, Lemon Lively, Lilac, Brilliant Lime, Magenta, Orange, Electric Orange, Pink, Hot Pink, Shocking Pink, Pumpkin, Purple, Red, Festive Red, Holiday Red, Light Red, Scarlet, Salmon, Slate, Tan, Turquoise, Violet, White, Yellow, Light Yellow and White.

Sizes Available: 12"x18", 18"x24" and 24"x36".

Weights Available: 65# and 76#.

Drawing Paper, Groundwood Free



12570 ...9"x12", White, 60#, 1/ream.....	\$7.21
12620 ...12"x18", White, 60#, 1/ream.....	\$14.25
12625 ...12"x18", White, 80#, 1/ream.....	\$18.48

Colors Available: Manila and White.

Sizes Available: 9"x12", 12"x18" and 18"x24".

Carbonless Paper Sets



17734 ...8.5"x11", 2 part, straight/reverse.....	\$19.18
17737 ...8.5"x11", 3 part, reverse.....	\$19.74
17944 ...8.5"x11", 4 part, Straight.....	\$17.74

Sequences Available: 2 Part Reverse, 2 Part Straight/Reverse, 3 Part Reverse, 3 Part Straight, 4 Part Reverse, 4 Part Straight and 5 Part Reverse.

Tagboard



17192 ...24"x4", 125#, manila strips, ruled 3/4" on both sides, 100/pkg.....	\$7.19
17180 ...24"x36", 150#, manila ruled sheets, 2 spaces 3/4", 1 space 1.5", repeated the 24" way on both sides, 100/pkg.....	\$28.03
17171 ...24"x36", 150# white unruled sheets, 100/pkg.....	\$24.08

Newsprint Paper, 20% Recycled Content



14975 ...24"x36", bulk packed, plain/unruled, 50 lbs.....	\$39.59
14950 ...12"x18", bulk packed, 30# publishers news, 50 lbs.....	\$43.32
14570 ...11"x8.5", full ruled the 11" way, 1/2" header, solid line, 1/4" to dotted line, 1/4" to solid line, 1/2" space, line repeat, 1/ream.....	\$2.49



Street: 18639 - 80th Ave S., Kent, WA 98032 - Mail: P.O. Box 5550, Kent, WA 98064
Phone: 425-251-8115, 800-422-5019 - Fax: 253-395-5402 - www.kcda.org