

AMPLIFICATION SYSTEM / P/A SYSTEM

A) Personal P/A System

Ideal for small meetings, briefings, facility tours, and classroom instruction. This unit is self-contained and weighs Eight ounces. Plug in the microphone, clip the lightweight amplifier onto your belt and turn it on! 2-Watt amplifier, Mic/Aux input (3.5mm), Separate volume and tone controls. Complete package includes: VoiceSaver, Headset Microphone, Charging Adapter, Adjustable Belt, 4 rechargeable nickel metal hydride 'AA' batteries. Califone. No Substitute.

KCDA No.	Mfg. No.	U/M	1-5	6+
29020	PA-282AV	Ea	65.97	64.97

AUDIO CASSETTE

B) Boom Box

20 programmable, variable speed CD player/cassette recorder, AM/FM radio and 2x counter. Built-in microphone and listening center with 6 headphone 1/4" jacks. AC and battery operated. Califone. No Substitute.

KCDA No.	Mfg. No.	U/M	1-11	12+
29105	2455AV-2	Ea	254.79	251.07

C) Califone Cassette Player/Recorder

Cassette player/recorder, uses 4 "C" batteries (not included) or 110v detachable power adapter (included), 500mW amplifier, 3.5mm mic, 2.5mm remote mic. Dimensions: 10-3/4" long x 5-1/2" wide x 2" high. Weight 4 lb. Califone, No Substitutie.

KCDA No.	Mfg. No.	U/M	1-2	3+
29126	CAS1500	Ea	41.41	40.45

D) CD Player/Cassette Player-Recorder

Combination cassette recorder/player and CD player, vibration and skip resistant CD deck with variable speed CD control. 7 watts amplifier output, 2-4" built-in speakers with left/right balance, records audio tapes from CDs, 5 position listening center. Eiki. No Substitute.

KCDA No.	Mfg. No.	U/M	1-5	6+
29108	8080A	Ea	283.21	278.75



Don't See What You Need Here?

We can source it for you.

Contact KCDA customer service with the details at customerservice@kcda.org or 800-422-5019.

E) Hamilton Cassette/CD/AM/FM Radio Boom Box

Portable Boom Box, includes cassette recorder, records from CD or built in microphone. Programmable CD player, AM/FM radio tuner, six 1/8" headphone jacks, 4 watt speaker, uses 8 "D" batteries (not included) or AC 120 volt cord. Dimensions: 14" wide x 10" high x 8" deep. Weight: 7 lbs. Hamilton, No Substitute.

KCDA No.	Mfg. No.	U/M	1-2	3+
29125	MPC-5050	Ea	62.16	60.72

F) Hamilton Classroom Cassette Player

Cassette player/recorder, 1 watt speaker, two 1/4" headphone jacks, Uses 4 "C" batteries (not included) or attached 5 foot 120 volt AC cord, built in condenser microphone. Hamilton, No Substitute.

KCDA No.	Mfg. No.	U/M	1-2	3+
29124	HA802	EA	38.72	37.82

AUDIO CASSETTE ACCESSORIES

G) Audio Cassette Recording Tapes

Economy bulk pack, unboxed, five screw assembly. Qualifying Standard: BASF.

KCDA No.	Desc	U/M	1-11	12+
29905	60 Minutes (30x2)	25/Pkg	19.95	19.64
29904	90 Minutes (45x2)	25/Pkg	24.37	23.99

H) Maxell Audio Cassette Head Cleaner

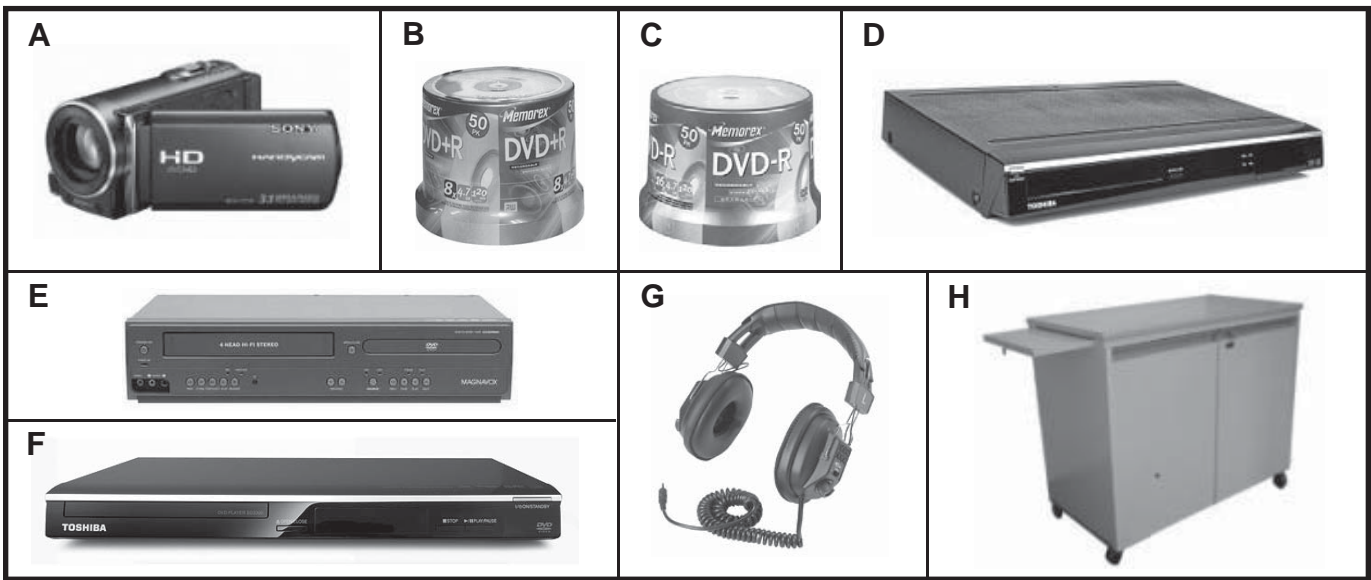
Economical, non-abrasive, two-step audio head wet cleaning system; cleans entire tape travel path of contaminants, tape heads, guides, capstan & pinch rollers; use after every 20 hours of use or when experiencing loss of sound quality. Maxell, No Substitute.

KCDA No.	Mfg. No.	U/M	1-59	60+
29914	191018	Ea	1.98	1.95

I) Maxell Audio Cassette Recording Tapes

This audio cassette tape's wide-frequency response and uniform output assure audio and Dictation recording accuracy even with repeated usage. Designed for high-use applications. Qualifying Standard: Maxell.

KCDA No.	Desc	U/M	1-49	50+
29893	30 Minutes (15x2)	Ea	1.20	1.16
29900	60 Minutes (30x2)	Ea	1.20	1.16
29899	90 Minutes (45x2)	Ea	1.20	1.16
29894	120 Minutes (60x2)	2/Pkg	1.97	1.92



CAMCORDER

A) Sony Camcorder, Full HD Video

Full HD video w/3MP still images, 25X optical zoom, memory stick PRO duo media slot, 1080/60p playback via HDMI and compatible HDTV. Color: Black. Sony, No Substitute.

KCDA No.	Mfg. No.	U/M	1	
29687	HDRCX110	Ea	448.88	

DVD DISKS

B) DVD+R Recordable Disks

4.7GB storage, more than six times the storage capacity of a CD. Great for audio, video or data storage. Durable write-once format with long archival life. Write-compatible with DVD drives and recorders supporting DVD+R. 16x, 50 per spindle. Memorex, No Substitute.

KCDA No.	Mfg. No.	U/M	1-9	10+
29277	32025619	Ea	24.77	24.41

C) DVD-R Recordable Disks

Write once format may not be altered once data is written to the disc. Read compatible with the majority of DVD-ROM drives and DVD video players. Single-sided, 4.7 GB. Multimedia storage such as combined data, music/video. Branded with manufacturers logo on one side. Surface color silver packaging spindle (plastic container, does not include jewel case or inserts) 50/spindle. Qualifying Standard: Memorex.

KCDA No.	U/M	1-5	6+
29279	Ea	24.22	23.85

DVD PLAYERS/RECORDERS

D) DVD Player/Recorder

Supports recording and playback of DVD R and DVD RW disks. Upconvert resolution up to 1080p via HDMI connection. Does not record TV programs from cable box or satellite receiver, external TV tuner must be purchased separately. Color: Black. Dimensions: 10" deep x 2.5" high x 16.5" wide. Weight: 5lbs. Toshiba, No Substitute.

KCDA No.	Mfg. No.	U/M	1-2	3+
29131	DR430	Ea	118.33	115.42

E) DVD/VCR Combo Player/Recorder

DVD/VCR combo, able to record from satellite dish or cable box, make VHS tape recordings, 4-head Hi-Fi VCR. Plays DVD, DVD+R/W, CD-R/W, DVD-R/W. Progressive scan Technology. Still frame and slow motion. Note: Unit does not have a TV tuner and records to VHS only. Dimensions: 17" wide x 4" high x 9" deep. Color: Gray. Magnavox, No Substitute.

KCDA No.	Mfg. No.	U/M	1-5	6+
29127	DV225MG9	Ea	102.94	100.55

F) Toshiba DVD/CD Player

The ColorStream Pro Progressive scan video output enhances the purity of an image's color and detail. The JPEG photo user option lets you view digital photos from your CDs and DVDs right on your very own television. Playback format: DVD, DVD+/-R/RW, CD-R/RW, VCD, MP3, JPEG, SVCD 14bit video DAC with 108MHz processing. Remote control with batteries, Owner's manual, AC cord, dimensions: 1.69" high x 8.23" deep x 13.00" wide. Toshiba, No Substitute.

KCDA No.	Mfg. No.	U/M	1-5	6+
29048	SD3300	Ea	37.29	36.44

HEADPHONES

G) Headphones Mono/Stereo

These headphones are switchable mono/stereo, 3.5mm mini plug w/snap-on 1/4" adapter, 10 foot coiled cord, dual volume controls on ear cups. 1 year warranty. Qualifying Standard: Califone.

KCDA No.	Mfg. No.	U/M	1-11	12+
29019	3068AV	Ea	7.93	7.74

LAMINATOR CABINET

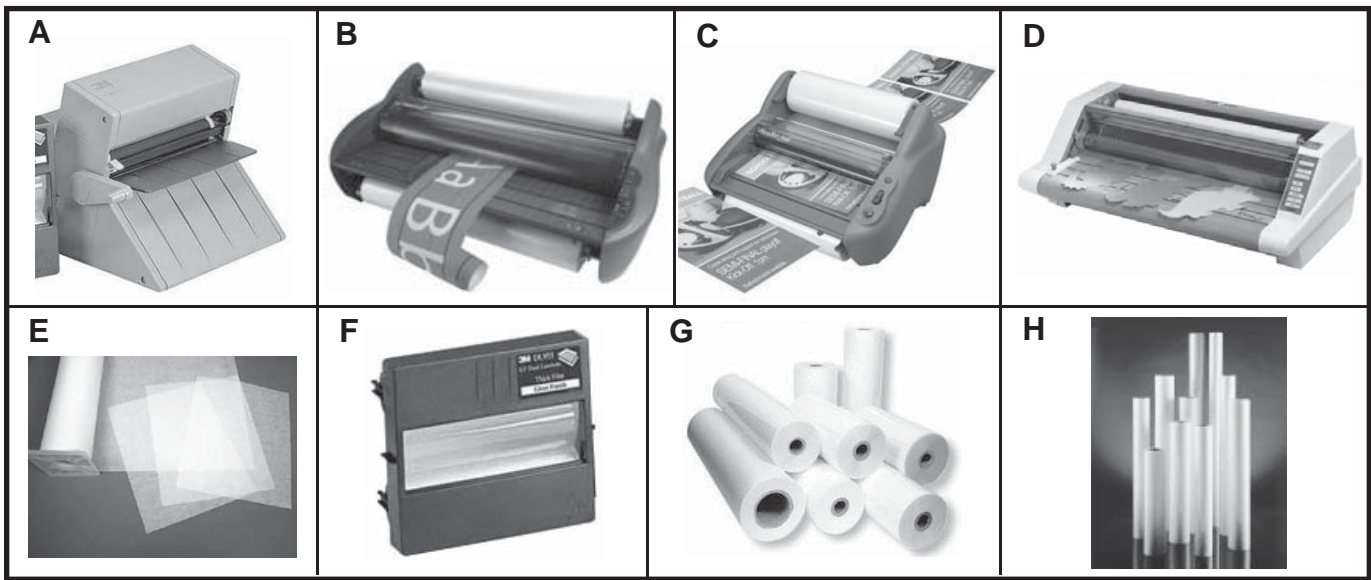
H) GBC Laminator Cabinet

Deluxe locking laminator cabinet, rolling casters for mobility, slide out shelf, supports laminators up to 35" and 200 lbs. Dimension: 36" wide x 18" deep x 30" high. 1 year Manufacturer warranty. GBC, No Substitute.

KCDA No.	Mfg. No.	U/M	1	
29016	1154314	Ea	541.20	

*** Don't See What You Need Here?**
We can source it for you.

Contact KCDA customer service with the details at customerservice@kcda.org or 800-422-5019.



LAMINATING MACHINES

A) 3M Desktop Laminator

Non-electric, heat free, hand operated laminator uses adhesive film cartridges. Portable, lightweight, versatile, safe. Integrated cutoff blade. Laminates any length document. 3M, No Substitute.
• Uses film KCDA No. 29230.

KCDA No.	Mfg. No.	U/M	1-11	12+
29005	LS950	Ea	127.31	125.36

B) Pinnacle 27 EZLoad Laminator

27" wide roll laminator, warm up time is 6-9 minutes, variable temperature control for use with Nap-Lam I and II film up to 3mil. Variable speed control. Patented EZLoad eliminates incorrectly loaded film problems. Weight: 106 lbs. Dimension: 35-1/2" wide x 21" long x 14-1/4" high. 1 year warranty. GBC, No Substitute.
• Uses EZ Load Film see KCDA Nos. 29310, 29311, 29312 & 29313.

KCDA No.	Mfg. No.	U/M	1
29004	1701720EZ	Ea	1590.78

C) Ultima 35 EZLoad Laminator

Thermal roll laminator with unique EzLoad roll film is simple to use, fast and flexible. Offers lamination width up to 12", all lengths. Runs NAP II film from 1.7 mil up to 10 mil thickness. Variable temperature. 1 minute warm-up time. Fixed speed of 3' per min. Weighs 35.2 lb. GBC, No Substitute.
• Uses film KCDA Nos. 29250, 29251 and 29252.

KCDA No.	Mfg. No.	U/M	1-1	2+
29001	1701680	Ea	477.54	435.85

D) Ultima 65 Laminator

Protects sheets up to 27", variable speed control, reverse switch, sliding blade cutter. Weighs 104 lbs. dimensions: 21" long x 32.5" wide x 12.5" high. GBC, No Substitute.
• Use Laminating Film KCDA Nos.: 29240, 29278, 29282, 29283, 29284, 29285, 29287, 29288, 29289, 29293, 29294.

KCDA No.	Mfg. No.	U/M	1
29000	1710740	Ea	1496.25



Don't See What You Need Here?

We can source it for you.

Contact KCDA customer service with the details at customerservice@kcda.org or 800-422-5019.

LAMINATING SUPPLIES / DRY MOUNT TISSUE

E) Dry Mount Tissue

Excellent general-purpose tissue that works well with RC or fiber based prints. Has a very low activating temperature of 165 degrees for use with items sensitive to heat. It is ideal for items like ink jet media where high heat is not possible. Works well with substrates such as cardboard and foam board. The product bonds as it cools to provide a strong lasting bond but can be removed by reheating the subject to 200 degrees. 20-1/2" x 50' Qualifying Standard: Drylam.

KCDA No.	U/M	1-11	12+
29280	1/Roll	63.44	62.44

LAMINATING SUPPLIES / FILM

F) 3M Laminating Film

Cartridge for desktop laminator. Laminates both sides, 8-1/2"x11", 100 ft. roll. 3M, No Substitute.
• Fits KCDA No. 29005 Laminator.

KCDA No.	Mfg. No.	U/M	1-29	30+
29230	DL951	Ea	37.20	36.64

G) Nap-Lam I Laminating Film

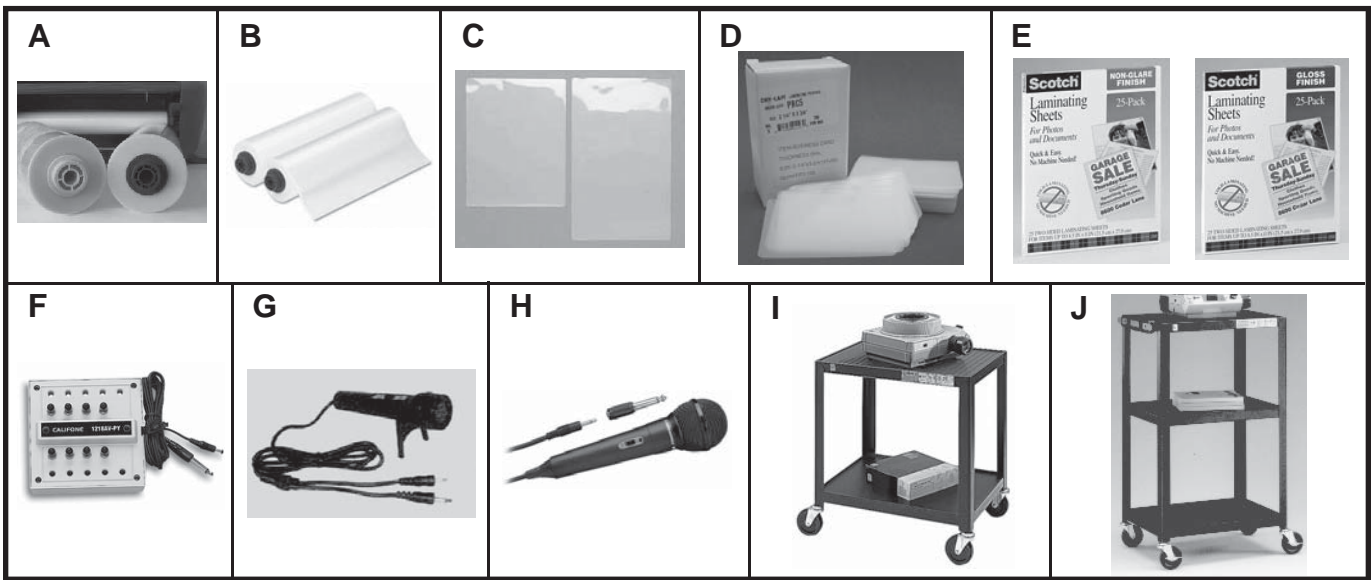
Clear mylar, roll is marked before the end. 500 foot rolls. GBC, No Substitute.
• Use in laminator KCDA No. 29000.

KCDA No.	Width	Core	Weight	Mfg. No.	U/M	1-11	12+
29282	9"	1"	1.5 Mil	3000001	2 Rolls/Ctn	35.53	34.97
29283	12"	1"	1.5 Mil	3000002	2 Rolls/Ctn	36.04	35.47
29284	18"	1"	1.5 Mil	3000003	2 Rolls/Ctn	39.60	38.97
29285	25"	1"	1.5 Mil	3000004	2 Rolls/Ctn	44.45	43.75
29288	27"	1"	1.5 Mil	3126061	1/Roll	29.25	28.58
29287	25"	2-1/4"	1.5 Mil	3000007	1/Roll	29.85	29.16

H) Nap-Lam II Laminating Film

Polyester-based thermal laminating film, 1" core, designed to run at a lower temperature and promote excellent adhesion with great clarity on coated/glossy papers and heavy ink coverage. GBC, No Substitute.
• Use in KCDA No. 29000 Laminator.

KCDA No.	Size	Weight	Mfg. No.	U/M	1-113	12+
29278	27"x500	1.5 ml	3125410	2 Rolls/Ctn	99.95	97.63
KCDA No.	Size	Weight	Mfg. No.	U/M	1-23	24+
29293	25"x200	3 ml	3125702	1/Roll	41.04	40.09
29294	27"x250	3 ml	3125710	1/Roll	48.09	46.98
29289	25"x200	5 ml	3125901	1/Roll	54.78	53.52



LAMINATING SUPPLIES / FILM, EZLOAD

A) GBC Pinnacle 27 EZLoad Laminating Film

This clear glossy EZload roll film utilizes patented technology to virtually eliminate costly film loading errors. Color-coded end caps help make film loading a snap eliminating costly service calls and making it virtually impossible to load your laminator backwards. This film is designed exclusively for use with GBC Pinnacle EZload roll laminators. GBC, No Substitute.

• Use in KCDA No. 29004.

KCDA No.	Size	Weight	Mfg. No.	U/M	1-5	6+
29310	25x500	1.5 Mil	3748201EZ	2/Box	116.07	114.29
29312	25x500	1.7 Mil	3748203EZ	2/Box	142.72	140.55
29313	25x250	3.0 Mil, Low Melt	3748204EZ	2/Box	122.05	120.19
29311	25x250	3.0 Mil	3748202EZ	2/Box	126.62	124.69

B) Ultima 35 EZLoad Laminating Film

EZLoad roll film. GBC, No Substitute.

• Use in KCDA No. 29001.

KCDA No.	Size	Weight	Mfg. No.	U/M	1-5	6+
29250	12"x300	1.7	3125365EZ	2/Box	59.93	59.02
29251	12"x200	3.0	3125913EZ	2/Box	79.90	78.68
29252	12"x100	5.0	3000052EZ	2/Box	30.26	29.80

LAMINATING SUPPLIES / POUCHES

C) Laminating Pouches

Two sided 3ml per side, lamination pouches encapsulate documents to provide outstanding protection from dirt, water and wear. Each box comes with 2 carriers to keep the laminator clean. Qualifying Standard: Dry-Lam.

KCDA No.	Size	U/M	1-11	12+
29295	9"x12"	100/Box	10.34	10.18
29296	12"x15"	100/Box	18.85	18.56
29297	18"x24"	50/Box	25.35	24.96

D) Laminating Pouches, Business Card

Business card size, 2-1/4"x3-3/4", 5 mil, heat sealing. Qualifying Standard: Dry-Lam.

KCDA No.	U/M	1-9	10+
29301	100/Box	2.45	2.40



Don't See What You Need Here?

We can source it for you.

Contact KCDA customer service with the details at customerservice@kcda.org or 800-422-5019.

LAMINATING SUPPLIES / SHEETS

E) Laminating Sheets

Self-adhesive, permanent, 11-5/8" x 9-1/16", 7ml each side for a sturdy cover, no heat or machine needed, 2-sided protection in one easy application. Qualifying Standard: 3M.

KCDA No.	Type	U/M	1-9	10+
95630	Gloss	25/Pkg	21.35	21.02
95631	Matte	25/Pkg	19.44	19.14

LISTENING STATIONS

F) Listening Stations

With volume control, free standing, case or table mountable, permanently attached cord, impact-resistant. Califone. No Substitute.

KCDA No.	Description	Mfg. No.	U/M	1-11	12+
29015	8 Station	1218AVPY	Ea	15.57	15.21

MICROPHONES

G) General Purpose Microphone

Approximately 4' cord with stand, 300 ohm, on-off switch, 3.5 mini - 2.5 sub-mini plugs. Qualifying Standard: Cal Rad.

KCDA No.	U/M	1-11	12+
29017	Ea	8.77	8.57

H) General Purpose Microphone

Unidirectional handheld microphone with 10' cable and 3.5mm mini-plug attached. 1/4" adapter included. Frequency 80-12,000 Hz. 500 ohms. Qualifying Standard: Audio-Technica.

KCDA No.	U/M	1-11	12+
29018	Ea	12.97	12.67

PROJECTOR SUPPLIES / CARTS

I) Overhead Projection Cart

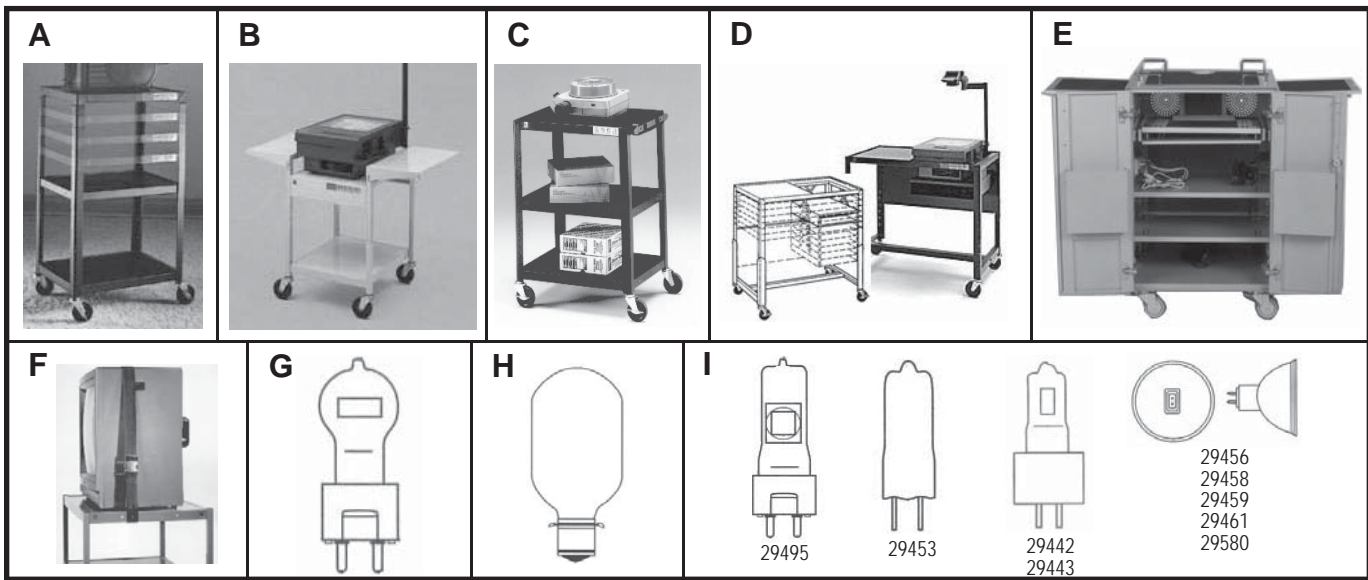
This cart measures 24" wide x 18" deep x 26" high, has 2 shelves and 4" casters. Qualifying Standard: Bretford.

KCDA No.	U/M	1
29093	Ea	95.86

J) Overhead Projection Cart

42" high, 18" x 24" top and two shelves, 5" casters, electric cord assembly and 20' of #16 three-wire cord. Qualifying Standard: Bretford.

KCDA No.	U/M	1
29097	Ea	111.48



A) Overhead Projection Cart

Adjustable height from 24" to 42", shelf size is 18" by 24". 4" casters, 2 locking, cable pass through holes, 2 outlet electric assembly. Qualifying Standard: Bretford.

KCDA No.	Color	U/M	1
29087	Quartz	Ea	131.13

B) Overhead Projection Cart

Steel construction with fold down drop leaves, platform: 17" wide x 19-3/4" deep. Drop leaves: 11" wide x 20-3/16" deep. Height is 29". Putty color powder coat paint, two-outlet electrical unit and 5" hard rubber casters, 2 locking. Qualifying Standard: Bretford.

KCDA No.	U/M	1
29094	Ea	223.39

C) Overhead Projection Cart

Mobile, 34" high, 18" x 24" top and two shelves, 5" casters, electric cord assembly and 20' of #16 three-wire cord. Qualifying Standard: Bretford.

KCDA No.	U/M	1
29095	Ea	107.90

D) Overhead Projector Cart

Adjustable, transports up to 460 pounds. Ribbed rubber mat for top shelf, 37" wide x 27" to 41" high x 22-1/2" deep, projector opening: 17-1/2" wide x 20-1/2" deep, 5" heavy duty casters, two with locking brakes, black enamel with 20" writing surface, two-grounded outlet cords. Qualifying Standard: Bretford.

KCDA No.	U/M	1
29077	Ea	297.43

E) The Boss AV Multimedia Mobile Cart

This mobile cart is made of smooth stainless steel has 4" locking swivel casters and two side folding shelves. Features VGA ports, USB ports and AV input/output connectors are located under one side shelf. A four-outlet surge-protected electrical assembly is located under the other side shelf. Perforated for ventilation and include grommets for easy cable management. The split front doors lock for security. Balt, No Substitute.

KCDA No.	Size	U/M	1
74360	38-3/4"Hx50"Wx20-1/2"D	Ea	862.65

PROJECTOR SUPPLIES / EQUIPMENT STRAPS

F) Equipment Straps

Nylon web strap with a steel grip buckle, 1" wide. Qualifying Standard: Abolins.

KCDA No.	Size	U/M	1-47	48+
29190	12 ft Long for 27" Monitors	Ea	12.97	12.67

PROJECTOR SUPPLIES / LAMPS / "B" SERIES

G) Projection Lamps "B" Series

Drawings not to scale.

KCDA No.	ANSI Code	Volts/Watts	Average Hours		U/M	1-71	72+
			of Life	U/M			
29544	BHC/DYS/DYV	120/600	75	Ea	3.32	3.22	

PROJECTOR SUPPLIES / LAMPS / "D" SERIES

H) Projection Lamps "D" Series

Drawings not to scale.

KCDA No.	ANSI Code	Volts/Watts	Average Hours		U/M	1-71	72+
			of Life	U/M			
29618	DRC/DRB	1000/120	50	Ea	19.04	18.47	

PROJECTOR SUPPLIES / LAMPS / "E" SERIES

I) Projection Lamps "E" Series

Drawings not to scale.

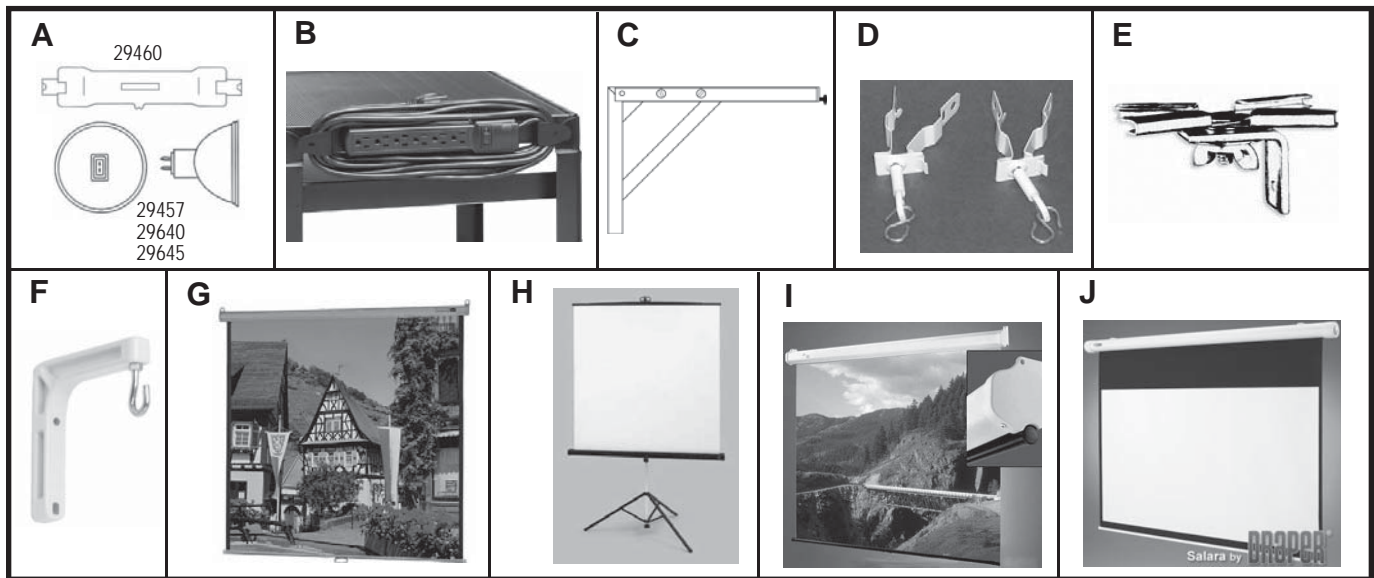
KCDA No.	ANSI Code	Volts/Watts	Average Hours		U/M	1-71	72+
			of Life	U/M			
29495	EHA	120/500	75	Ea	9.11	8.84	
29642	EHJ	24/250	50	Ea	1.20		
29456	ELH	120/300	35	Ea	5.03	4.88	
29459	ENX	82/360	75	Ea	3.66	3.60	
29458	ENX-5	86/360	75	Ea	3.86	3.74	
29453	EVD	36/400	50	Ea	3.22	3.12	
29442	EYB	82/360	75	Ea	3.28	3.18	
29443	EYB-5	86/360	75	Ea	3.32	3.22	



Don't See What You Need Here?

We can source it for you.

Contact KCDA customer service with the details at customerservice@kcda.org or 800-422-5019.



PROJECTOR SUPPLIES / LAMPS / "F" SERIES

A) Projection Lamps "F" Series

Drawings not to scale.

KCDA No.	ANSI Code	Volts/Watts	Average		U/M	1-71	72+
			of Life	Hours			
29460	FAL	120/420	75	Ea	6.50	6.30	
29457	FHS	82/300	70	Ea	4.82	4.68	
29640	FXL	82/410	50	Ea	4.49	4.36	
29645	FXL-5	86/410	50	Ea	6.03	5.85	

PROJECTOR SUPPLIES / POWER STRIP

B) Bretford AV Cart Electrical Unit

This Electrical unit attaches to any steel Bretford television, audio visual, overhead projector cart, or security center without the use of tools. 6 electrical outlets with surge and overload protection and an on/off switch. 20' long, 3-wire power cord with grounded plug. Mounting bracket doubles as a cord winder. Includes all hardware for mounting to carts and retrofits onto existing Bretford carts by using pre-drilled holes in the shelf. Bretford, No Substitute.

KCDA No.	Desc	Mfg. No.	U/M	1
29249	6 Outlets	E6	Ea	15.07

PROJECTOR SUPPLIES / WALL SCREEN CLAMPS

C) Draper's Keystone Eliminator Wall Brackets

Made with heavy gage angle steel brackets with white epoxy powder coat finish, and adjusts between 16" to 24" from wall by simple wing and bolt adjustment. Qualifying Standard: Da-Lite.

KCDA No.	U/M	1-11	12+
29110	Pair	11.69	11.42

D) Scissor Clip Wall Screen Brackets

For dropped ceiling-type T-rails, T-bars, supports screens up to 50 pounds. Da-Lite, No Substitute.

KCDA No.	Mfg. No.	U/M	1-11	12+
29111	78445	Pair	9.02	8.81

E) T-Bar Twist Clips

Mount screens directly to T-irons, on supporting suspended ceilings without tools. Draper, No Substitute.

KCDA No.	Mfg. No.	U/M	1-11	12+
29113	227016	Pair	9.02	8.81

F) Wall Screen Brackets

Heavy duty plastic wall screen bracket, non-adjustable. Extends wall screen 6" out from wall, white. Qualifying Standard: Da-Lite.

KCDA No.	U/M	1-11	12+
29114	2/Box	8.16	7.98

PROJECTOR SUPPLIES / WALL SCREENS

G) Projection Screen

Projection Screen, 84"x84", matte white, wall or ceiling. Qualifying Standard: Da-Lite, Draper.

KCDA No.	U/M	1
29168	Ea	87.51

H) Tripod Projection Screens

Matte white, fiberglass, cam lock metal roller system, built-in keystone eliminator and plunger lock for secure setting, gable constructed aluminum legs, height adjusts to room with an 8' ceiling. Qualifying Standard: Buhl.

KCDA No.	Size	U/M	1-7	8+
29165	60" x 60"	Ea	87.63	86.25
29166	70" x 70"	Ea	99.03	97.47

I) Projection Wall Screens

Fiberglass, matte white, cam lock metal roller system, mechanical pull down locks at intervals. Qualifying Standard: Da-Lite.

KCDA No.	Size	U/M	1-5	6+
29130	70x70	Ea	60.93	59.97
29120	60x60	Ea	53.91	53.06
29135	96x96	Ea	131.74	128.70

J) Draper Salara Projection Screens

Matte white projection screens, electric plug and play. Easy installation, mounts to wall. Hardwired screen, with 10 foot IEC cord plugs into a socket in back of case and the other end into the nearest wall outlet. Built in controller and IR receiver, w/handheld IR transmitter. Draper Salara, No Substitute.

KCDA No.	Size	Mfg. No.	U/M	1
29146	60x60	136002	Ea	544.98
29147	70x70	136003	Ea	554.79
29148	84x84	136004	Ea	642.01
29149	96x96	136005	Ea	697.58



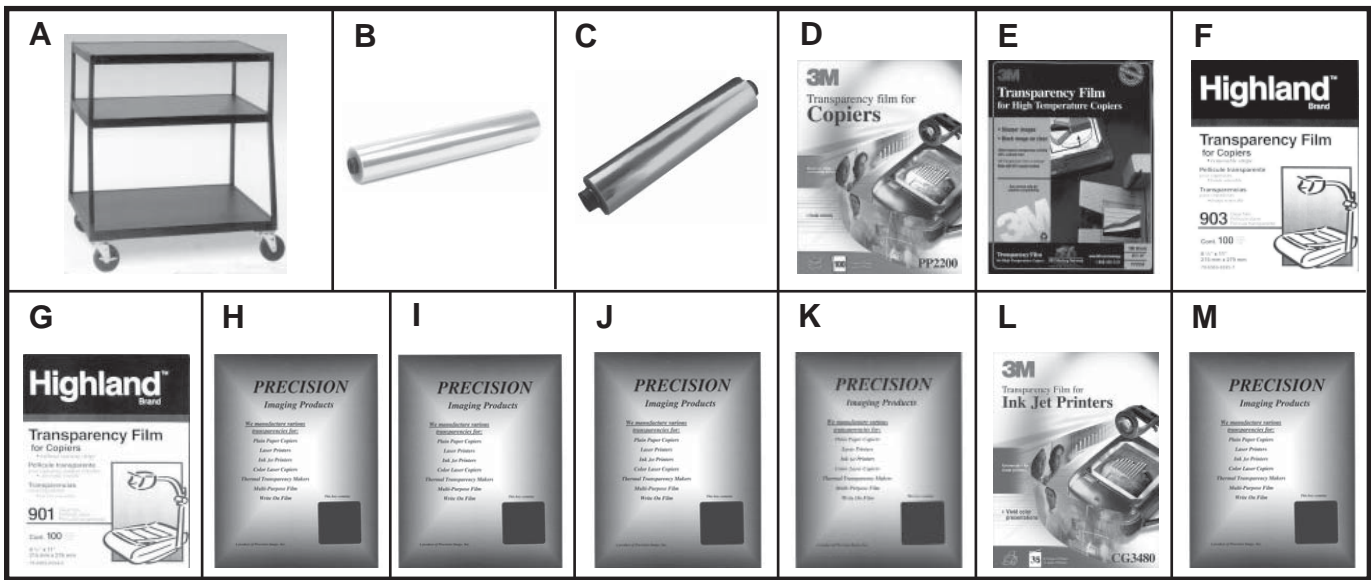
Don't See What You Need Here?

We can source it for you.

Contact KCDA customer service with the details at customerservice@kcda.org or 800-422-5019.



Visit www.kcda.org for the most current pricing and product information. Prices in this catalog are subject to change without notice.



TELEVISION SUPPLIES / CARTS

A) Television Cart

Large monitor TV cart, 41" high with 5" plate, casters - 2 locking. Overall dimensions: 37" wide x 27-1/2" deep holds up to 35" televisions. Qualifying Standard: Bretford.

KCDA No.	U/M	1
29186	Ea	212.50

TRANSPARENCIES / ACETATE ROLLS

B) 3M Overhead Projector Acetate Roll

This acetate is a .005 mil gauge, the spool is 10-3/4" long and the acetate is 10-1/4" long. Fits 3M and most other brands. 3M, No Substitute.

KCDA No.	Mfg. No.	U/M	1-59	60+
29207	AF4310	50 Ft	10.66	10.41

C) Overhead Projector Acetate Roll

This acetate is a .005 mil gauge, the spool is 10-3/4" long and the acetate is 10-1/4" long. Fits 3M and most other brands. Qualifying Standard: Generic.

KCDA No.	U/M	1-59	60+
29206	50 Ft	6.43	6.29

TRANSPARENCIES / COPIER

D) 3M Copier Transparency Film

8.5"x11, clear transparency film with removable sensing strip. For use in plain paper copiers. 3M, No Substitute.

KCDA No.	Mfg. No.	U/M	1-5	6+
29760	PP2200	100/Box	19.45	19.00

E) 3M Copier Transparency Film

8-1/2"x11", for use in plain paper copiers, 4 mil, clear, high temperature, universal film. 3M, No Substitute.

KCDA No.	Mfg. No.	U/M	1-49	50+
29603	PP2950	100/Box	20.62	20.30

F) 3M Highland Copier Transparency Film

8-1/2"x11", for copiers requiring a removable sensor strip, (Xerox 1075, 1035, 1045). Black image, clear background. 3M, No Substitute

KCDA No.	Mfg. No.	U/M	1-49	50+
29759	903	100/Box	9.14	8.99

G) 3M Highland Copier Transparency Film

8-1/2"x11", for most copiers not requiring a sensor strip. Clear, 4 mil, 3M, No Substitute.

KCDA No.	Mfg. No.	U/M	1-49	50+
29751	901	100/Box	8.16	8.03

H) Copier Transparencies

8-1/2" x 11", for use on plain paper copiers. Side bond paper-backed, 4 ml thick, Similar to KCDA No. 29752. Qualifying Standard: Precision Graphics.

KCDA No.	U/M	1-49	50+
29954	100/Box	17.19	16.93

I) Copier Transparencies

8-1/2"x11", for use on plain paper copiers. 1/2" removable sensing stripe, 4 ml, Similar to KCDA #29759. Precision Graphics, No Substitute.

KCDA No.	Mfg. No.	U/M	1-49	50+
29952	10-110	100/Box	11.64	11.47

J) Copier Transparencies

8-1/2"x11", for use on plain paper copiers. 29950 is similar to KCDA No. 29751, and 29951 is similar to KCDA No. 29603. Qualifying Standard: Precision Graphics.

KCDA No.	Thickness	U/M	1-49	50+
29950	4 mil	100/Box	9.09	8.96

K) Copier Transparencies, Hi-Temp

8-1/2"x11", for use on plain paper copiers. High-temperature, 29950 is similar to KCDA No. 29751, and 29951 is similar to KCDA No. 29603. Qualifying Standard: Precision Graphics.

KCDA No.	Thickness	U/M	1-49	50+
29951	5 mil	100/Box	13.19	12.99

TRANSPARENCIES / INKJET PRINTER

L) 3M Inkjet Printer Transparencies

8.5"x11", for use with black and white universal inkjet printers. 3M, No Substitute.

KCDA No.	Mfg. No.	U/M	1-5	6+
29761	CG3480	50/Box	31.30	30.57

M) Inkjet Printer Transparencies

8-1/2"x11", for use on inkjet printers, 3/8" removable top stripe, 4 ml, Similar to KCDA No. 29840. Precision Graphics, No Substitute.

KCDA No.	Mfg. No.	U/M	1-49	50+
29958	10-405	50/Box	12.75	12.56



A) Inkjet Printer Transparencies

8-1/2"x11", removable strip, clear. 3M Highland, No Substitute.

KCDA No.	Mfg. No.	U/M	1-49	50+
29840	707	50/Box	26.43	26.02

B) Inkjet Printer Transparencies

Quick-dry for inkjet printers. Dries in seconds, not minutes. Produces brilliant color images. Has removable sensing strip for smooth feeding. Apollo, No Substitute.

KCDA No.	Mfg. No.	U/M	1-49	50+
29842	CG7033S	50/Box	19.73	19.43

TRANSPARENCIES / LASER PRINTER

C) 3M Laser Printer Transparency Film

4mil, 8-1/2"x11", clear laser printer film for most laser printers, high density black image. 3M, No Substitute.

KCDA No.	Mfg. No.	U/M	1-49	50+
29600	CG3300	50/Box	20.45	20.14

D) Laser Printer Transparencies

4 ml, 8-1/2"x11", similar to KCDA No. 29600. Qualifying Standard: Precision Graphics.

KCDA No.	U/M	1-49	50+
29956	50/Box	6.38	6.28

TRANSPARENCIES / MULTIPURPOSE

E) 3M Multipurpose Transparency Film

8-1/2"x11". Clear, can be used with black and white copiers, laser and color ink jet printers. One side is coated for ink jet printers, the other for toner-based printers. The sensing strip tells you which side to use on your machine. 3M, No Substitute.

KCDA No.	Mfg. No.	U/M	1-49	50+
29750	CG6000	50/Box	37.60	37.02

TRANSPARENCIES / WRITE ON

F) Write-On Transparency Film

8-1/2" x 11", crystal clear film. Qualifying Standard: Scott Electric.

KCDA No.	Size	U/M	1-29	30+
29680	5 mil	100/Box	6.50	6.25
29682	10 mil	100/Box	9.10	8.75

TRIPOD

G) Video Tri-pod

Lightweight and easily portable. Extends from 21 inches to 56 inches. Two-way panhead. Maximum load 6-1/2 pounds. Qualifying Standard: Sony.

KCDA No.	U/M	1-2	3+
28993	Ea	30.40	29.68

TWO WAY RADIOS

NOTE: if you are using your two-way radios mainly inside and around buildings, then choose UHF. If you are using your two-way radios for communication outside, then choose VHF.

H) Kenwood Pro Talk Two-Way Radio

2 watt output power, VHF operation, 151-159 MHz frequencies, 16 channels, LED light provides function information. Includes AC adapter, charging dock, rechargeable battery up to 17 hours, belt clip, antenna. 5-6 mile range. 1 year warranty. Kenwood, No Substitute.

KCDA No.	Mfg. No.	U/M	1
29266	2300V16P	Ea	190.13

I) Kenwood Protalk Two Way Radio

Two-way radio has 56 programmable frequencies UHF 1.5 watt 6 channel, 5-mile range, 18 hours battery life with Li-Ion battery. 2-year warranty. Kenwood, No Substitute.

KCDA No.	Mfg. No.	U/M	1
29210	TK-3230	Ea	165.30

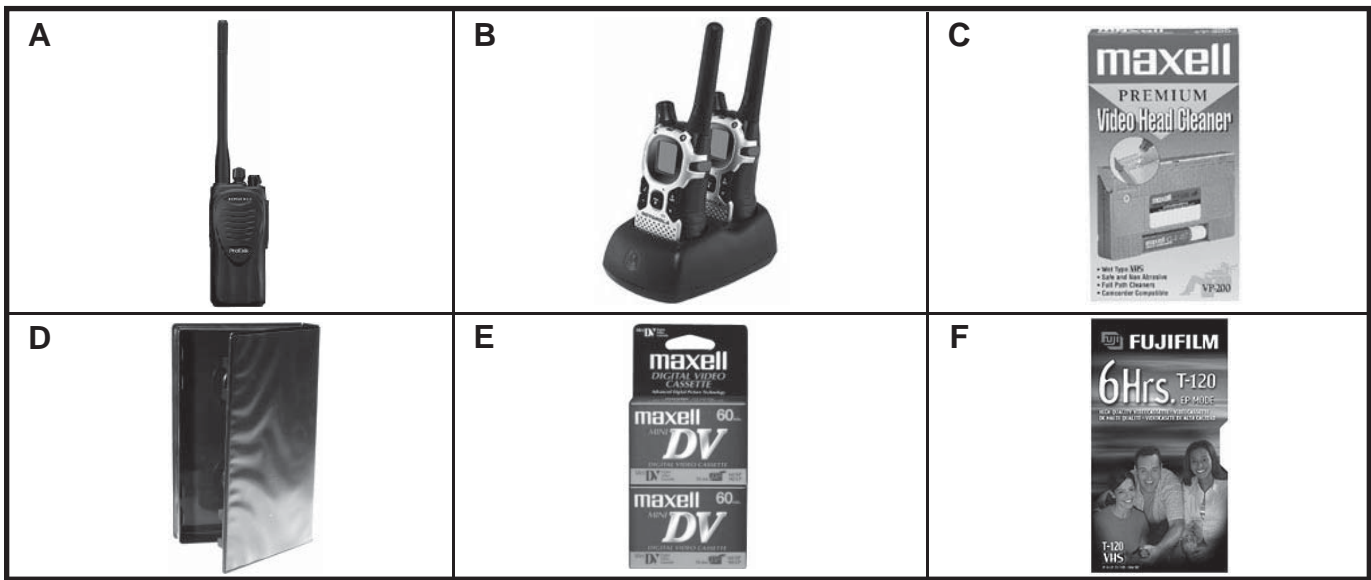
J) Kenwood Pro-Talk Two-Way Radio

UHF frequency, 461-470 MHz, 2 watt, 4 channel. Lithium battery offers 22 hours battery life. Coverage to 20 floors, up to 6 miles. Lightweight and durable, resistant to dust and water. Includes Lithium rechargeable battery pack, drop-in charger, AC charging adapter, belt clip. Kenwood, No Substitute.

KCDA No.	Mfg. No.	U/M	1
29234	TK-3300U4P	Ea	186.74

*** Don't See What You Need Here?**
We can source it for you.

Contact KCDA customer service with the details at customerservice@kcda.org or 800-422-5019.



A) Kenwood Two-Way Radio

Made of die-cast chassis w/polycarbonate case, weather sealed construction, lithium-ion battery, 151-159 MHz, VHF 2 watt 4 channel. Open areas without obstructions up to 6 miles. Residential areas near buildings up to 1.5 miles. 2 year limited warranty. Kenwood, No Substitute.

KCDA No.	Mfg. No.	U/M	1
29265	TK-2300V4P	Ea	178.88

B) Motorola Two-Way Radio

With a possible range of 27 miles, emergency alert feature, and built-in LED flashlight. 7 NOAA channels with 22 frequency capacity and 121 privacy codes. Includes 2 radios, 2 belt clips, 1 dual charger and 2 NiMH rechargeable battery packs. Motorola, No Substitute.

KCDA No.	Mfg. No.	U/M	1-5	6+
29223	MJ270R	Pkg	60.86	59.42

VIDEO CASSETTE SUPPLIES

C) VHS Cassette Head Cleaner

Non-abrasive wet cleaning cassette. Cleans tape heads and entire tape path. Exclusive cleaning material prevents re-depositing of debris on heads. This cleaning tape is safe and effective for all types of VCRS. Maxell, No Substitute.

KCDA No.	Mfg. No.	U/M	1-59	60+
29921	290038	Ea	3.75	3.69

D) VHS Video Cassette Storage Case

Full sleeve, black plastic, hubless design, snaps tight. Qualifying Standard: Polyline.

KCDA No.	U/M	1-23	24+
29922	Ea	0.70	0.68

VIDEO CASSETTE TAPES

E) Maxell Mini DV Cassette Tape

MiniDV provides stunning video and razor sharp still images with all MiniDV camcorders. 60 minutes 2-pk. Maxell, No Substitute.

KCDA No.	Mfg. No.	U/M	1-24	25+
29927	298012	2/Pkg	11.17	11.00

F) VHS Tape

Designed for repeated record/erase cycles, this VHS video tape produces premium grade picture and sound quality. Great for recording in extended play modes. 6 hour record time in EP mode. Qualifying Standard: Fuji.

KCDA No.	U/M	1-35	36+
29920	Ea	2.20	2.15

Audio Visual



Don't See What You Need Here?

We can source it for you.

Contact KCDA customer service with the details at customerservice@kcda.org or 800-422-5019.