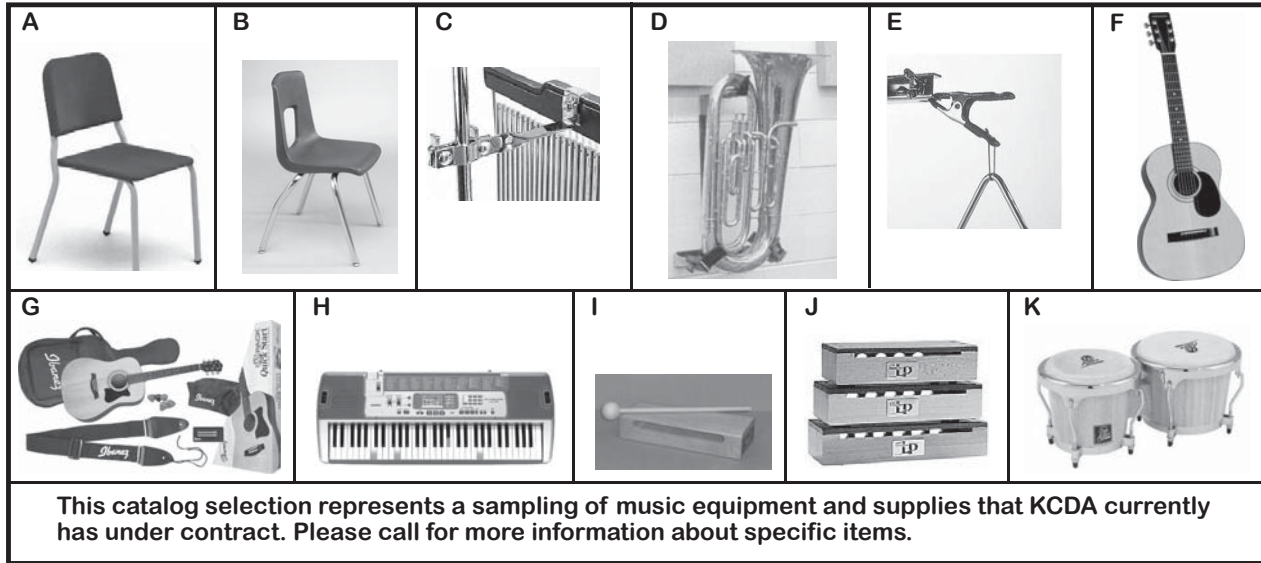


2009 KCDA CATALOG



This catalog selection represents a sampling of music equipment and supplies that KCDA currently has under contract. Please call for more information about specific items.

CHAIRS

A) Music Chair

Help students to sit with proper posture: back straight, feet flat for better breath control. Soft plastic seats and backs, stackable. Qualifying Standard: Wenger 0930000. Note: Chair height is measured from the bottom edge of the seat to the floor.

| KCDA No. | Color/Frame | Height | U/M | 1-4 | 5+ |
|----------|-------------|---------|-----|--------|-------|
| 44174 | Black/Black | 18-1/2" | Ea | 101.16 | 99.52 |

B) Student Music Chairs

Help students sit in proper posture. 17-1/2" height. Qualifying Standard: Artco Bell.

| KCDA No. | Color/Frame | U/M | 1-4 | 5+ |
|----------|-----------------|-----|-------|-------|
| 44412 | Burgundy/Chrome | Ea | 52.75 | 51.89 |
| 44437 | Navy/Chrome | Ea | 52.75 | 51.89 |
| 44434 | Navy/Pewter | Ea | 46.68 | 45.93 |

INSTRUMENT ACCESSORIES

C) Bar Chime Bracket

Mount all for bar chimes, attaches to stands 3/8" to 1-1/8" in diameter using a reversible "V" bracket, eye bolt clamping system, solid steel. Qualifying Standard: LP Brand.

| KCDA No. | U/M | 1-21 | 22+ |
|----------|-----|-------|-------|
| 44785 | Ea | 13.35 | 13.03 |

Block Clamp

Percussion wood Qualifying Standard: LP Brand.

| KCDA No. | U/M | 1-57 | 58+ |
|----------|-----|-------|-------|
| 44807 | Ea | 12.14 | 11.86 |

D) Instrument Wall Bracket

Adjusts from 17-1/2" to 32-1/2" in height, 14" to 26" in width, mounts on sheet rock or masonry. Qualifying Standard: Wenger.

| KCDA No. | U/M | 1-5 | 6+ |
|----------|-----|--------|--------|
| 44632 | Ea | 260.46 | 256.17 |

E) Triangle Holder

Clip-on. Qualifying Standard: LP Brand.

| KCDA No. | U/M | 1-71 | 72+ |
|----------|-----|------|------|
| 44848 | Ea | 7.65 | 7.53 |

INSTRUMENTS / GUITARS

F) Hohner Acoustic Guitar

1/2 scale, for little musicians, 6 strings, spruce top, mahogany back, sides and neck, hardwood fret, inline tuners. Hohner HW03, No Substitute.

| KCDA No. | U/M | 1-5 | 6+ |
|----------|-----|-------|-------|
| 54165 | Ea | 75.27 | 74.08 |

G) Ibanez Acoustic Guitar Jam Pack

6 string guitar, gig bag, electronic tuner, guitar strap, accessory pouch, spruce top. Ibanez IJV50, No Substitute.

| KCDA No. | U/M | 1-5 | 6+ |
|----------|-----|--------|--------|
| 54163 | Ea | 198.60 | 195.46 |

INSTRUMENTS / KEYBOARD

H) Casio Electronic Keyboard

61 full-size lighted keys, 100 preset tones, 100 song bank tunes, 50 rhythms, fingering guide, MIDI interface, microphone jack. Casio LK100, No Substitute.

| KCDA No. | U/M | 1-5 | 6+ |
|----------|-----|--------|--------|
| 54130 | Ea | 151.74 | 149.34 |

INSTRUMENTS / PERCUSSION

I) Block, Wood

With mallet. Qualifying Standard: EM.

| KCDA No. | U/M | 1-57 | 58+ |
|----------|-----|------|------|
| 44805 | Ea | 9.49 | 9.26 |

J) Blocks

Percussion, exotic hardwood playing surface with maple body. Qualifying Standard: LP Brand.

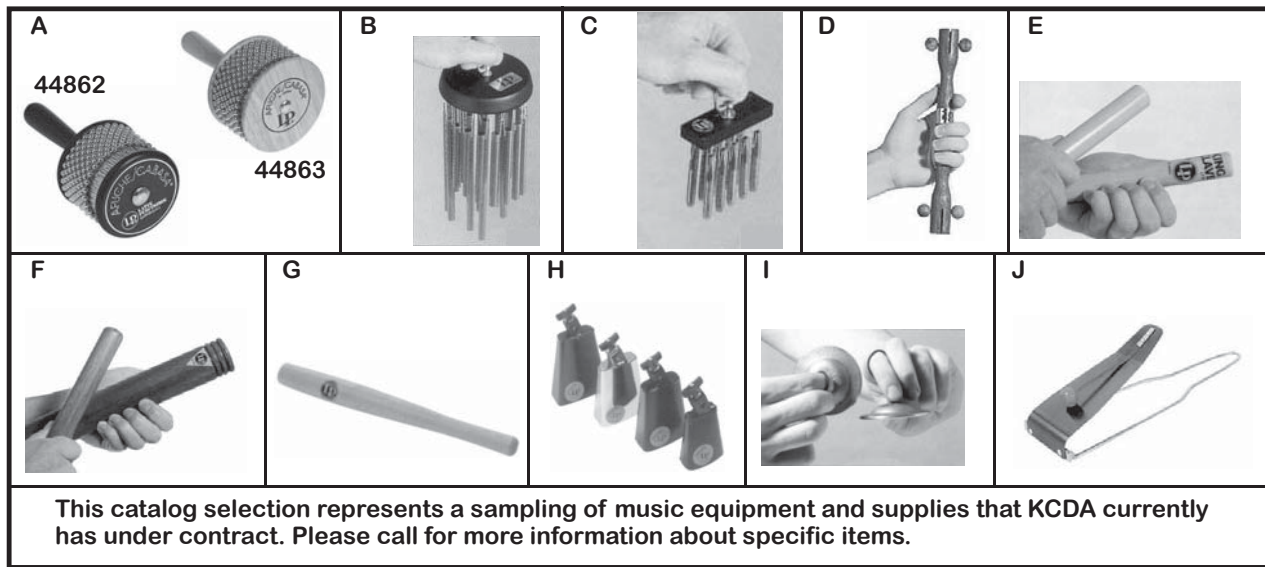
| KCDA No. | Size | U/M | 1-21 | 22+ |
|----------|----------|-----|-------|-------|
| 44802 | Large | Ea | 26.57 | 25.93 |
| 44800 | Small | Ea | 24.92 | 24.33 |
| 44801 | Standard | Ea | 25.49 | 24.89 |

K) Bongos

Natural finish, 7-1/4" and 8-5/8" heads, chrome hardware. Qualifying Standard: LP Brand.

| KCDA No. | U/M | 1-5 | 6+ |
|----------|-----|-------|-------|
| 44748 | Ea | 42.30 | 41.61 |

2009 KCDA CATALOG



Music

This catalog selection represents a sampling of music equipment and supplies that KCDA currently has under contract. Please call for more information about specific items.

A) Cabasas

Steel ball construction. Qualifying Standard: LP Brand.

| KCDA No. | Description | U/M | 1-71 | 72+ |
|----------|----------------------|-----|-------|-------|
| 44862 | Plastic, Mini, Black | Ea | 18.18 | 17.90 |
| 44863 | Wood, Standard | Ea | 26.41 | 26.00 |

B) Chimes, Cluster

These chimes have a convenient ring hanger for easy mounting or hand holding. The 12 bar set is higher in pitch while the 24 bar set has a lower pitch with a more extended range. Both models feature kevlar strings for durability. Qualifying Standard: LP Brand.

| KCDA No. | Desc | U/M | 1-59 | 60+ |
|----------|---------------|-----|-------|-------|
| 44859 | 24 Bar, Large | Ea | 39.59 | 38.66 |

C) Chimes, Pin

These chimes create a cutting, high-pitched chime for the small size. The ring hanger makes it easy to hang these chimes almost any where. Kevlar strings hold the ten chimes in place. Qualifying Standard: LP Brand.

| KCDA No. | U/M | 1-59 | 60+ |
|----------|-----|-------|-------|
| 44860 | Ea | 22.77 | 22.23 |

D) Ching Chok

Double ended, two tones, rosewood. Qualifying Standard: LP Brand.

| KCDA No. | U/M | 1-71 | 72+ |
|----------|-----|-------|-------|
| 44888 | Ea | 22.62 | 22.26 |

E) Clave, King

The King clave is the loudest clave available and is made of specially formulated fiberglass. This clave measures 8" long x 1" wide and has the projection and volume to cut through loud live music. They are also ideal for marching bands. Qualifying Standard: LP Brand.

| KCDA No. | U/M | 1-59 | 60+ |
|----------|-------|-------|-------|
| 44917 | 1/Set | 17.33 | 16.92 |

Please check our website at www.kcda.org - Click on ordering and Supply Link for the most current listing of products and pricing. Pricing in this catalog are as of the printing date and are subject to change without notice.

F) Claves

These claves are crafted of kiln dried exotic hardwood. The 44916 (standard clave) measures 10" long x 1-7/8" wide and the striker measures 10" long x 3/4" wide and features a cut-away sound chamber for volume and to vary the sound quality. The 44915 (African clave) measures 12" long x 1-3/4" wide and the striker measures 10" long x 1" wide and features the same cut-away chamber, but also has a hollowed center for broader, more open tones. Qualifying Standard: LP Brand.

| KCDA No. | Desc | U/M | 1-59 | 60+ |
|----------|----------|-------|-------|-------|
| 44915 | African | 1/Set | 22.26 | 21.74 |
| 44916 | Standard | 1/Set | 20.62 | 20.13 |

G) Cowbell Beater

Wood, loud tones. Qualifying Standard: LP Brand.

| KCDA No. | U/M | 1-58 | 59+ |
|----------|-----|------|------|
| 44762 | Ea | 7.59 | 7.41 |

H) Cowbells

The 44756 has a high pitched bright sound with a moderate overtone and a slightly rounded playing surface to make it easy to get a good sound with every hit of the stick. 44755 has a similar shape to 44756 but with a wider mouth. It is tuned a whole step lower in pitch and has a moderately dry sound with dynamic projection. These feature a forged eye-bolt clamp with an oversized wing nut to provide secure mounting placement with finger tightening. Qualifying Standard: LP Black Beauty.

| KCDA No. | Desc | U/M | 1-27 | 28+ |
|----------|------------|-----|-------|-------|
| 44756 | High Pitch | Ea | 22.26 | 21.74 |
| 44755 | Low Pitch | Ea | 22.77 | 22.23 |

I) Cymbals, Finger

Made of a special cast bronze alloy, these handmade cymbals measure 2-1/2" in diameter and have a clear, delicate, pure sound. Each cymbal is mounted to a finger strap. Qualifying Standard: LP Brand.

| KCDA No. | U/M | 1-71 | 72+ |
|----------|------|-------|-------|
| 44838 | Pair | 12.79 | 12.59 |

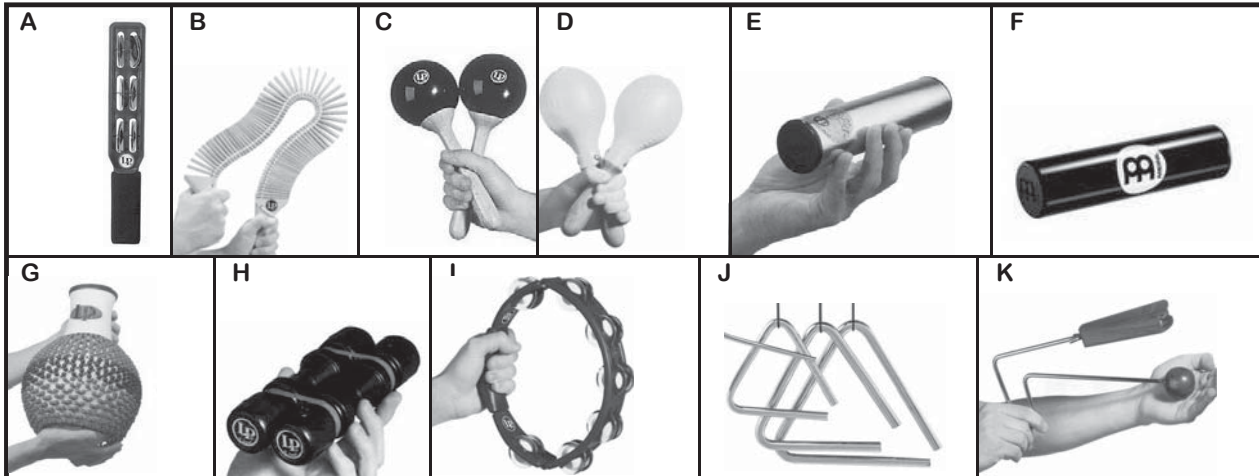
J) Flex-A-Tones

Steel spring, wood ball. Qualifying Standard: LP Brand.

| KCDA No. | Size | U/M | 1-71 | 72+ |
|----------|----------|-----|-------|-------|
| 44901 | Standard | Ea | 20.37 | 20.05 |



2009 KCDA CATALOG



This catalog selection represents a sampling of music equipment and supplies that KCDA currently has under contract. Please call for more information about specific items.

A) Jingle Sticks

Plastic rim, foam grip, use alone or in place of drum sticks. Qualifying Standard: LP Brand.

| KCDA No. | Description | U/M | 1-21 | 22+ |
|----------|-------------|-----|-------|-------|
| 44828 | Steel/Black | Ea | 19.54 | 19.08 |

B) Kokirikos

Wooden, creates a dominoes falling sound, Qualifying Standard: LP Brand.

| KCDA No. | U/M | 1-59 | 60+ |
|----------|-----|-------|-------|
| 44885 | Ea | 35.80 | 34.95 |

C) Maracas

Ebony, plastic, round design, swirling sound, steel fill. Qualifying Standard: LP Brand.

| KCDA No. | U/M | 1-59 | 60+ |
|----------|------|-------|-------|
| 44911 | Pair | 24.92 | 24.33 |

D) Maracas

These professional maracas feature bright, loud sound with vibrant yellow, plastic shells and wood handles. Offered in matched pairs of one high pitch and one low pitch. This variation in pitch is the way maracas were historically designed to produce the classic maraca sound. Qualifying Standard: LP Brand.

| KCDA No. | U/M | 1-59 | 60+ |
|----------|------|-------|-------|
| 44910 | Pair | 15.18 | 14.82 |

E) Shaker

This shaker is compact, durable and is made of metal construction. It is great for a wide variety of musical situations. Shake it easy for lighter sounds or shake it harder to cut through live music. It fits comfortable in any hand and is a must for all percussionists. Qualifying Standard: LP Brand.

| KCDA No. | U/M | 1-71 | 72+ |
|----------|-----|-------|-------|
| 44872 | Ea | 12.72 | 12.52 |

F) Shakers

This shaker is designed to cut through live music with impact, its metallic shell helps deliver a loud cutting sound. The unique fill cap allows players to adjust the amount or type or fill to personalize the sound. Qualifying Standard: LP Brand.

| KCDA No. | Color | U/M | 1-71 | 72+ |
|----------|-------|-----|-------|-------|
| 44874 | Black | Ea | 20.37 | 20.05 |
| 44873 | Gold | Ea | 20.37 | 20.05 |

G) Shekere Pro

This shekere has a white fiberglass body that is wrapped in a lattice of plastic black and red plastic beads it produces loud, high pitched shaker and rattle sounds. The large fiberglass body, thick neck and wide mouth produce extremely low bass tones when struck on the bottom. A rubber ring surrounds the mouth of the shekere to protect it. Qualifying Standard: LP Brand.

| KCDA No. | U/M | 1-59 | 60+ |
|----------|-----|--------|--------|
| 44884 | Ea | 105.88 | 103.37 |

H) Soft Shaker

Soft, plastic construction. Qualifying Standard: LP Brand.

| KCDA No. | U/M | 1-71 | 72+ |
|----------|-------|-------|-------|
| 44871 | 2/Set | 11.56 | 11.39 |

I) Tambourines

Cyclops, plastic rim. Qualifying Standard: LP Brand.

| KCDA No. | Desc | U/M | 1-21 | 22+ |
|----------|--------------------------------|-----|-------|-------|
| 44818 | Black Rim/Brass Jingles | Ea | 23.85 | 23.28 |
| 44819 | Black Rim/Dimple Brass Jingles | Ea | 23.85 | 23.28 |
| 44815 | Black Rim/Steel Jingles | Ea | 21.69 | 21.18 |
| 44817 | White Rim/Steel Jingles | Ea | 21.69 | 21.18 |

J) Triangles

Made from a specially selected high alloy steel that has been carefully heat tempered, polished and chrome plated, they produce a pure shimmering sound. Two strikers are included, a thin version for delicate playing and a larger diameter version for louder playing. A nylon hanging string is included. Qualifying Standard: LP Brand.

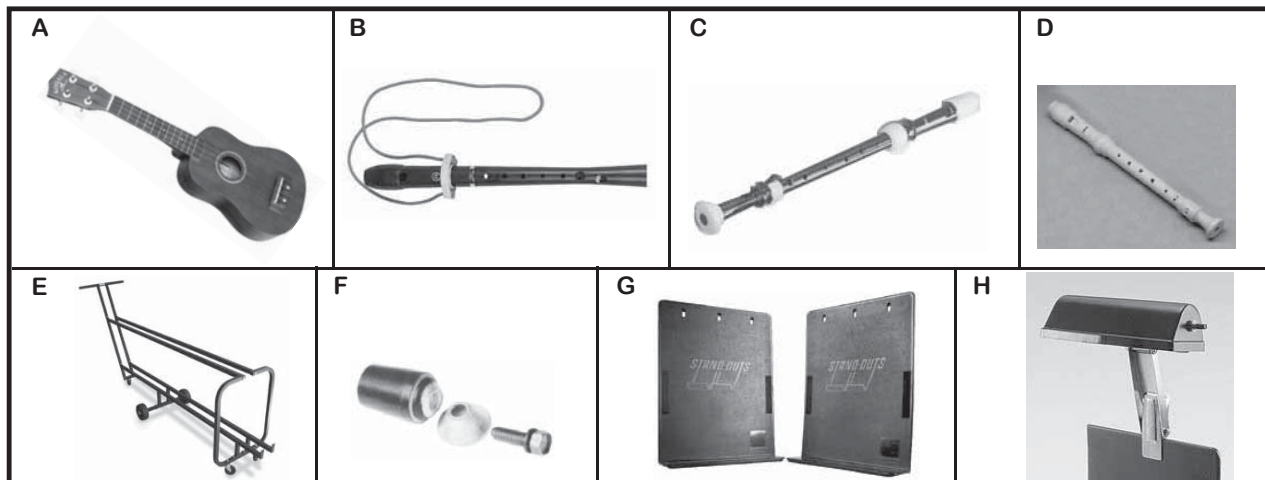
| KCDA No. | Size | U/M | 1-71 | 72+ |
|----------|------|-----|-------|-------|
| 44845 | 4" | Ea | 18.18 | 17.90 |
| 44846 | 5" | Ea | 19.27 | 18.98 |

K) Vibra Slaps

The Vibra-Slap makes its sound when the ball end is struck against the palm of the hand. This sound can be varied simply by rotating the sound chamber. The wood has a warm crisp tone. Qualifying Standard: LP Brand.

| KCDA No. | Description | U/M | 1-59 | 60+ |
|----------|-------------|-----|-------|-------|
| 44896 | Deluxe | Ea | 33.59 | 32.79 |
| 44895 | Standard | Ea | 27.77 | 27.11 |

2009 KCDA CATALOG



Music

This catalog selection represents a sampling of music equipment and supplies that KCDA currently has under contract. Please call for more information about specific items.

INSTRUMENTS / UKELELE

A) Ukelele

Mahogany-type nato wood top, back, sides and fretboard, 12 frets, geared tuner, bound body. Qualifying Standard: Lanikai Kohala.

| KCDA No. | U/M | 1-5 | 6+ |
|----------|-----|-------|-------|
| 54167 | | 44.21 | 43.51 |

INSTRUMENTS / WOODWIND

B) Peripole Recorder, Beginner Soprano

Peripole Halo Hanger suspends the recorder from the neck, thus allowing hands free access for other coordinated musical activities. Vinyl zippered case to house recorder with the Peripole Halo Hanger attached. Self-adhesive Peripole Thumb Spot to serve as a thumb positioner. Revised Peripole Fingering Chart. Peripole, No Substitute

| KCDA No. | Description | U/M | 1-23 | 24+ |
|----------|-------------|-----|------|------|
| 54620 | Baroque | Ea | 5.88 | 5.74 |

Recorder, Beginner Soprano

Zippered case, fingering chart and cleaning rod, 2 piece, Qualifying Standard: Gill.

| KCDA No. | Description | U/M | 1-23 | 24+ |
|----------|-------------|-----|------|------|
| 54621 | German | Ea | 2.47 | 2.41 |

Recorder, Professional - Soprano; Key of F

Baroque fingering; double holes: F-F#, G-G#; two-piece construction. These Rottenburg style recorders utilize ABS resin for strength and feature an arched wind way and hollow construction of the fipple/block. All 300 series recorders are packaged in a soft case with a fingering chart, owners manual, cleaning rod and cream. Qualifying Standard: Yamaha.

| KCDA No. | U/M | 1-11 | 12+ |
|----------|-----|-------|-------|
| 54630 | Ea | 10.69 | 10.44 |

C) Recorder, Professional - Tenor; Key of C

Baroque fingering; double holes: D-D#, single C key; thumb rest; three-piece construction. These Rottenburg style recorders utilize ABS resin for strength and feature an arched wind way and hollow construction of the fipple/block. All 300 series recorders are packaged in a soft case with a fingering chart, owners manual, cleaning rod and cream. Qualifying Standard: Yamaha.

| KCDA No. | U/M | 1-11 | 12+ |
|----------|-----|-------|-------|
| 54633 | Ea | 46.65 | 45.89 |

D) Recorders, Beginner's

Baroque fingering, includes bag and fingering chart. Cleaning rod is included with KCDA No. 54623 only. Qualifying Standard: Yamaha.

| KCDA No. | Description | U/M | 1-23 | 24+ |
|----------|-------------|-----|-------|-------|
| 54623 | Alto, F Key | Ea | 14.99 | 14.63 |
| 54626 | Soprano | Ea | 4.81 | 4.69 |

MUSIC STAND ACCESSORIES

E) Manhasset Music Stand Cart

Holds up to 25 concert music stands, allows easy racking and removal of music stands and provides convenient storage. Dimensions of 92 inches long by 43 inches high by 22 inches wide and along with its pivot center axle allows it to maneuver easily on all floor surfaces. Manhasset 1910, No Substitute.

| KCDA No. | U/M | 1 |
|----------|-----|--------|
| 44508 | Ea | 270.90 |

F) Music Stand Conversion Kit

Conversion kit locks wobbly stands firmly into place. Qualifying Standard: Manhasset Stands.

| KCDA No. | U/M | 1-47 | 48+ |
|----------|-----|------|------|
| 44525 | Ea | 3.66 | 3.61 |

G) Music Stand Extender

Qualifying Standard: Manhasset.

| KCDA No. | U/M | 1-9 | 10+ |
|----------|------|-------|-------|
| 44523 | Pair | 11.56 | 11.39 |

H) Music Stand Lamp

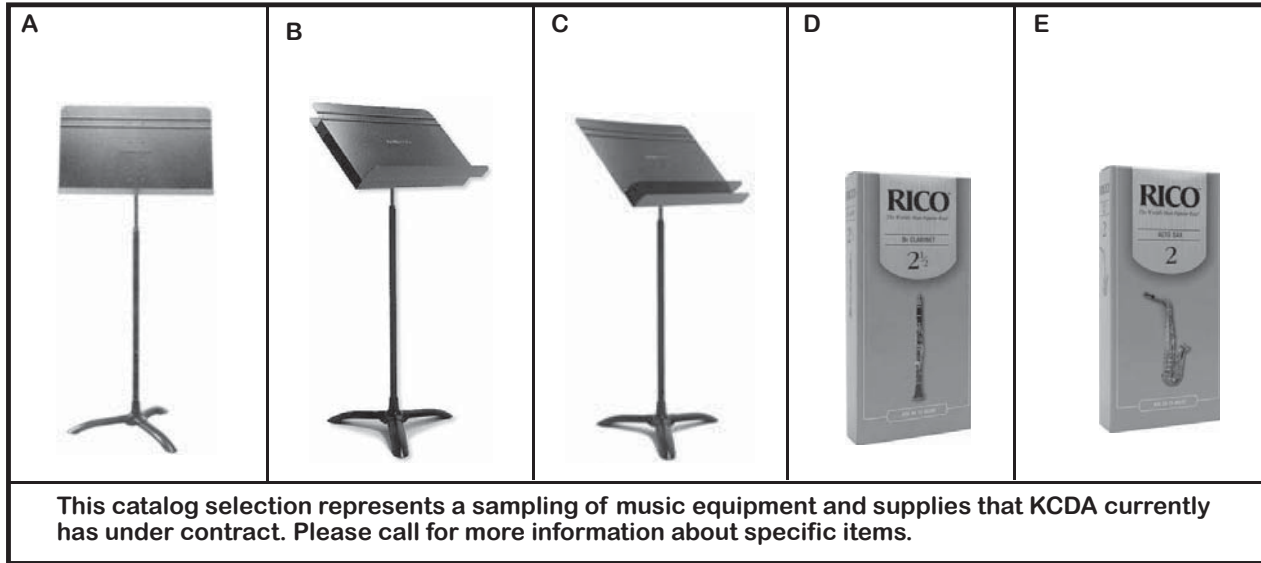
Fits Wenger stands, metal with black finish, uses 40 watt bulb, 6' electrical cord. Qualifying Standard: Wenger.

| KCDA No. | U/M | 1-9 | 10+ |
|----------|-----|-------|-------|
| 44492 | Ea | 48.50 | 47.35 |

Please check our website at www.kcda.org - Click on ordering and Supply Link for the most current listing of products and pricing. Pricing in this catalog are as of the printing date and are subject to change without notice.



2009 KCDA CATALOG



This catalog selection represents a sampling of music equipment and supplies that KCDA currently has under contract. Please call for more information about specific items.

MUSIC STANDS

Music Stand, Adjustable

Metal, black, 20" wide x 12-1/2" desk, adjustable 24" - 46". Qualifying Standard: Wenger Roughneck.

| KCDA No. | U/M | 1-9 | 10+ |
|----------|-----|-------|-------|
| 44502 | Ea | 59.73 | 58.76 |

A) Music Stand, Adjustable

Metal, black, desk is 20" wide x 12-1/2" high, adjustable 24" - 48". Qualifying Standard: Manhasset.

| KCDA No. | U/M | 1-9 | 10+ |
|----------|-----|-------|-------|
| 44509 | Ea | 24.32 | 23.92 |

B) Music Stand, Director's

This stand is unique in its double desk construction, provides easily accessible music storage at your fingertips. Black. Qualifying Standard: Manhasset.

| KCDA No. | U/M | 1-28 | 29+ |
|----------|-----|-------|-------|
| 44511 | Ea | 38.37 | 37.46 |

C) Music Stand, Orchestra Conductor's

Designed especially for concert orchestras. Double-lip shelf provides convenient storage for bows, rosin, pencils, reeds, valve oil, and more! Solid brass bearings and clutches, the original Magic Finger Clutch; a rugged yet lightweight all-aluminum desk; automatic friction-tilt neck; and a heavy-gauge, all-steel base. Qualifying Standard: Manhasset.

| KCDA No. | U/M | 1-16 | 17+ |
|----------|-----|-------|-------|
| 44512 | Ea | 33.92 | 33.40 |

REEDS

Bassoon Reeds

Qualifying Standard: Rico.

| KCDA No. | Desc | U/M | 1-23 | 24+ |
|----------|------------|-----|------|------|
| 54596 | Strength M | Ea | 6.69 | 6.53 |

D) Clarinet Reeds

Designed for a wide variety of playing situations, these reeds are cut of the most flexible grade of cane. Packaged in boxes. Qualifying Standard: Rico.

| KCDA No. | Strength | For | U/M | 1-29 | 30+ |
|----------|----------|--------|--------|-------|-------|
| 54544 | 2-1/2 | Bass | 25/Box | 52.50 | 51.25 |
| 54530 | 1-1/2 | B Flat | 25/Box | 27.96 | 27.29 |
| 54538 | 2 | B Flat | 25/Box | 27.96 | 27.29 |
| 54546 | 2-1/2 | B Flat | 25/Box | 27.96 | 27.29 |
| 54562 | 3-1/2 | B Flat | 25/Box | 27.96 | 27.29 |

Oboe Reeds

Qualifying Standard: Rico.

| KCDA No. | Desc | U/M | 1-23 | 24+ |
|----------|------------|-----|------|------|
| 54591 | Strength M | Ea | 6.13 | 5.98 |

E) Saxophone Reeds

Packaged in boxes. Qualifying Standard: Rico.

| KCDA No. | Description | For | U/M | 1-29 | 30+ |
|----------|----------------|-------|--------|-------|-------|
| 54542 | Strength 2 | Alto | 25/Box | 42.31 | 41.31 |
| 54550 | Strength 2-1/2 | Alto | 25/Box | 42.31 | 41.31 |
| 54548 | Strength 2-1/2 | Bari | 25/Box | 70.65 | 68.97 |
| 54549 | Strength 2-1/2 | Tenor | 25/Box | 56.04 | 54.71 |

Please check our website at www.kcda.org - Click on ordering and Supply Link for the most current listing of products and pricing. Pricing in this catalog are as of the printing date and are subject to change without notice.