

Virco Colors

Adding Inspiration To Your Environment



Furniture That Fits®

VIRCO COLOR PROGRAM

Virco products are available in an inspiring array of colors and frame finishes, allowing a full range of expression from traditional to modern. Because color has such an impact on how individual products are perceived, and furthermore because a roomful of furniture can read differently than an individual sample, we encourage you to order samples to confirm compatibility with your overall design plan. Please see the back page of this brochure for information on how to order samples.

Virco offers a variety of lead-time specific color programs – please contact your local Virco Sales Representative for more information. Models and color combinations can be found in our price list.

In addition to our Virco color programs, Virco is capable of providing custom colors and finishes for your specific project. Because of the capabilities and processes available in our U.S. Factories, we have the ability to do custom color matches from samples or swatches for plastics, powder coat, laminates, edge treatments, as well as custom logo designs. Extended lead-times may apply on custom projects.

CAUTION: Due to color reproduction variability in printed materials and digital media, Virco recommends that you review product colors on sample coupons or swatches before purchasing to confirm that your product color choices coordinate with the interior spaces for which these products are intended. Virco will provide complimentary sample coupons or swatches for plastic, laminate, powder coat paint and upholstery colors; however, it is the customer's responsibility to request these sample materials. Once you've submitted your request, your Virco Sales Representative will be happy to assist you with this process.

FRAME FINISH COLORS



Chrome
CHRM



Char Black
BLK01



Silver Mist
GRY02



Adobe
BRN42



Moonstone
GRY05



Eclipse
GRY11



El Dorado Bronze
GLD93



Golden Bronze
GLD91



* Mocha
BRN16



Espresso
BRN26



Red
RED70



Squash
YLW47



Navy
BLU51



Forest Green
GRN75



Clear Coat
CLR



Natural Steel
NST

** Mocha is only available on models 162 and 168 folding chairs.*

Virco's Clear Coat is a transparent secondary powder coat finish that adds extra sheen and protection when applied over other Virco paint finishes. Clear Coat cannot be used as a secondary finish over Virco's Natural Steel paint finish.

Natural Steel is our unique finishing process that allows the natural patina of raw steel to show through a protective layer of clear urethane-based powder coat. The authentic nature of the steel, including the heat effects of welding, are clearly visible with this finish.

SOFT PLASTIC AND ABS PLASTIC COLORS - Seats, Book Boxes, Stools and Mobile Stool Tables Seats

						
<i>Celery*</i> GRN19	<i>Green Apple</i> GRN12	<i>Willow</i> GRN13	<i>Avocado*</i> GRN08	<i>Moss</i> GRN77	<i>Cucumber</i> GRN34	<i>Kelly Green</i> GRN15
						
<i>Forest Green</i> GRN75	<i>Sea Mist</i> GRN07	<i>Teal</i> GRN11	<i>Turquoise</i> BLU45	<i>Horizon</i> BLU14	<i>Sky Blue</i> BLU40	<i>Cobalt Blue</i> BLU65
						
<i>Navy</i> BLU51	<i>Hyacinth</i> BLU44	<i>Lavender</i> PUR45	<i>Wisteria</i> PUR65	<i>Purple Iris</i> PUR43	<i>Wine</i> RED50	<i>Fuchsia</i> RED72
						
<i>Pink</i> RED73	<i>Coral</i> RED53	<i>Paprika</i> ORG31	<i>Red</i> RED70	<i>Guava</i> RED75	<i>Peach*</i> RED35	<i>Sunset</i> ORG30
						
<i>Mustard*</i> YLW21	<i>Papaya</i> YLW44	<i>Lemon Yellow</i> YLW45	<i>Squash</i> YLW47	<i>Gold Finch</i> GLD22	<i>Chocolate</i> BRN14	<i>Arctic White</i> WHT74
						
<i>Moonstone</i> GRY05	<i>Vapor</i> GRY65	<i>Driftwood</i> WHT21	<i>Adobe</i> BRN42	<i>Dusk</i> BRN55	<i>Eclipse</i> GRY11	<i>Graphite</i> GRY41
						
<i>Black</i> BLK01						

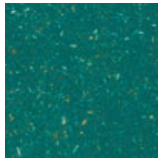
Minimum quantities and extended lead-times may apply to some of the Soft Plastic & ABS Plastic Colors in this catalog. Please contact your Virco representative or consult Virco's current Factory price list for more information.

* Not available on ABS plastic stools and stool tables.

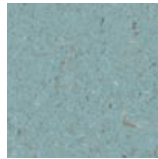
FRW™ HARD PLASTIC COLORS



Green Apple
GRN12



Pine
GRN85



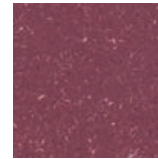
Sea Mist
GRN07



Indigo
BLU61



Lagoon
BLU50



Merlot
RED60



Fuchsia
RED72



Pink
RED73



Strawberry
RED80



Coral
RED53



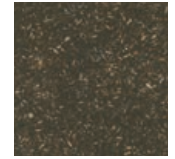
Papaya
YLW44



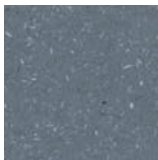
Squash
YLW47



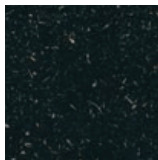
Natural
BRN62



Chocolate
BRN14



Graphite
GRY41



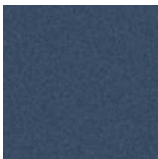
Raven
BLK21

Due to the high recycled content and visible particles in ZUM Afrd™ products, you may notice slight color variations among individual items.

MARTEST® 21 HARD PLASTIC COLORS



Forest Green
GRN75



Navy
BLU51



Sky Blue
BLU40



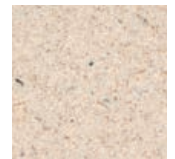
Wine
RED50



Red
RED70



Black
BLK01

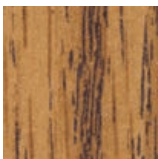


Sandstone
BRN96

FRW™ HARD PLASTIC DESK-TOP COLORS



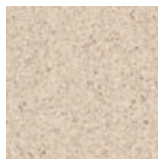
Fusion Maple
BRN38



Medium Oak
OAK84



Grey Nebula
GRY91



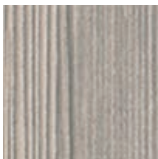
Sandstone
BRN96



Asian Sand
MPL08



Dry Creek Plum
OAK72



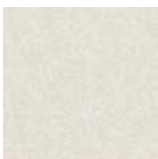
Looks Likatre
WHT66

Ask a Virco representative about customizing desk tops by adding your school name or mascot.

CORE-A-GATOR® ABS PLASTIC TOP COLORS



Greystone
GRY55



Oyster
WHT15

MOBILE CHAIR BASE COLORS



Char Black
BLK01



Silver Mist
GRY02

HIGH-PRESSURE LAMINATE COLORS



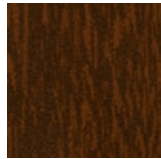
Fusion Maple
MPL385



Medium Oak
OAK084



Carmel Sagawood
WOD619



Walnut
WAL078



Wild Cherry
MHG586



Biltmore Cherry
MHG588



Dry Creek Plum
OAK072



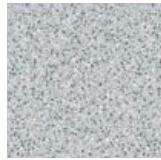
Looks Likatze
WHT066



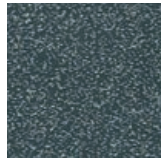
Asian Sand
MPL008



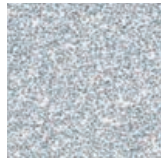
Grey Elm
WOD803



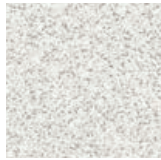
Grey Nebula
GRY091



Graphite Nebula
BLK535



Cloud Nebula
BLU092



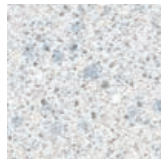
White Nebula
GRY074



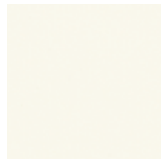
Natural Tigris
BRN697



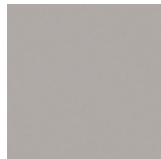
Bronze Legacy
BRN416



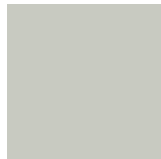
Grey Glace
GRY065



Antique White
WHT001



Pepperdust
BRN039



Grey
GRY005



Shadow
BRN415



Marigold
YLW031



Atlantis
BLU043



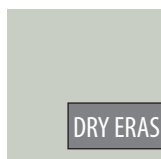
Ask a Virco representative about customizing laminated tops by adding your school name or logo.



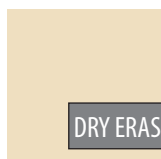
Hollyberry
RED431



DE Ice White
WHT067



DE Folkstone Gray
GRY069



DE Neutra
BRN068

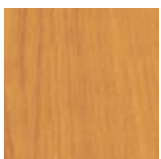
DRY ERASE

Dry erase laminates are not recommended for certain surfaces. Ask your Virco Representative for more details. To order products with a Dry Erase surface, add DE to the end of the model number.

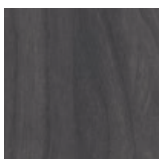
WOOD STAINS FOR CIVITAS® PLYWOOD SEATS AND BACKS



Parchment
WHT07



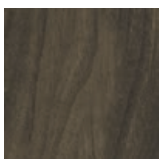
Oriental Ginger
BRN27



Classic Black
BLK16



Fruit Punch
RED19



Charcoal Grey
GRY17



Green Tea
GRN18



Deep Ocean
BLU15



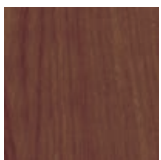
Natural Beige
BRN24



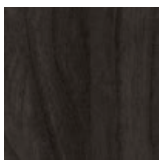
Mustard
YLW21



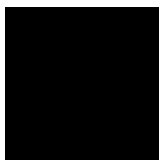
Clear
CLR



Red Mahogany
RED81



Smoke
GRY22



Black
BLK01

LOW PROFILE EDGE BANDING COLORS - 3/4" Profile

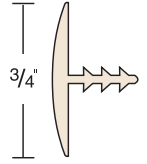
This banding profile is for the following series: Mobile Cabinets, Steel Frame Bookcases, Mobile Tables and Folding Tables



Char Black
BLK01



Fusion Maple
BRN38



UNIVERSAL EDGE BANDING COLORS - 1 1/8" Profile

This banding profile is for the following series: 4000, 5000, 5700, 6800, Flip-Top Technology, Tetra™, Tilt-Top Training, HWT (Hinged Wire Trough), Café Table Tops, 540 Teacher's Desk and Molecule Desks.



Char Black
BLK01



Moonstone
GRY05



Blond Tuscani
BRN09



Fusion Maple
BRN38



Golden Allusion
GLD01



Adobe
BRN42



Eclipse
GRY11



Squash
YLW47



Green Apple
GRN12



Kelly Green
GRN15



Forest Green
GRN75



Sky Blue
BLU40



Cobalt Blue
BLU65



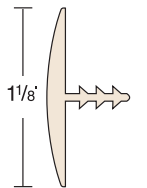
Navy
BLU51



Purple Iris
PUR43



Red
RED70



ARCHITECTURAL EDGE BANDING COLORS - 1 1/8" Profile

This banding profile is for the following series: Instructor Media Stations, TEXT®, Textameter™, Parameter®, Plateau®, Lunada®, Crank-Top, ZBOOM Desks, ZUMA® Two-Student Desks and Wheelchair Height Desks.



Fusion Maple
BRN38



Carmel Sagawood
BRN61



Char Black
BLK01



Windsor Cherry
MHG67



Golden Allusion
GLD01



Blond Tuscani
BRN09



Moonstone
GRY05

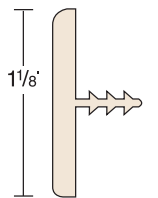


Adobe
BRN42



Eclipse
GRY11

Minimum quantities and extended lead-times may apply to some of the edge banding colors for selected products shown in this catalog. Please contact your Virco representative or consult Virco's current factory price list for more information.



TOPAZ™ SERIES 3MM EDGE BANDING COLORS - 1 1/8" Profile

This banding profile is for the following series: Topaz™ Series.



Fusion Maple
BRN38



Carmel Sagawood
BRN61



Char Black
BLK01



Windsor Cherry
MHG67



Golden Allusion
GLD01



Blond Tuscani
BRN09



Moonstone
GRY05



Adobe
BRN42



Eclipse
GRY11



SURE EDGE COLORS



Virco's durable, water-resistant Sure Edge® optional finish is available for an expanded range of tables, student desks and combo units.

Sure Edge forms a seamless, chemically bonded seal that prevents food particles from lodging in table-top edges. As a urethane-based sealant that's applied with an innovative anti-bacterial process for extra cleanliness, Sure Edge won't peel or flake; it even resists fading when exposed to direct sunlight.

We offer urethane-based Sure Edge as an option on our tables, desks and combo units. Whether you choose it for your cafeteria or your classrooms, Sure Edge delivers long-lasting moisture resistant protection. Please consult your current Virco price list for the availability of specific models.



Char Black
BLK01



Moonstone
GRY05



Blond Tuscani
BRN09



Fusion Maple
BRN38



Golden Allusion
GLD01



Adobe
BRN42



Eclipse
GRY11



Squash
YLW47



Green Apple
GRN12



Kelly Green
GRN15



Forest Green
GRN75



Sky Blue
BLU40



Cobalt Blue
BLU65



Navy
BLU51



Purple Iris
PUR43



Red
RED70

Minimum quantities and extended lead-times may apply to some of the Sure Edge® colors in this catalog. Please contact your Virco representative or consult Virco's current Factory price list for more information.

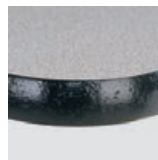
WOOD COMPOSITE LACQUERED EDGE FINISH



Clear
CLR



Smoke
GRY22



Black
BLK01

Shown here are standard edge treatments for 5/8" MDF or particleboard, high-pressure laminate tops on single-pupil desks, chair desks and combo units.

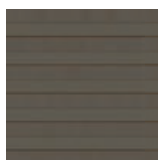
CIVITAS® LACQUERED PLYWOOD EDGE FINISH



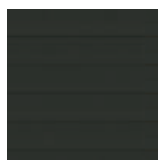
Clear
CLR



Red Mahogany
RED81

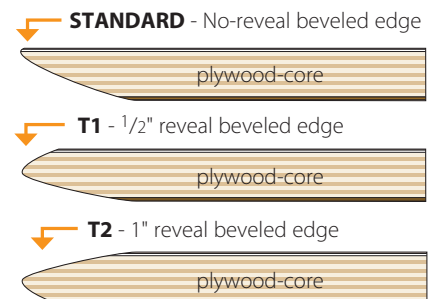


Smoke
GRY22



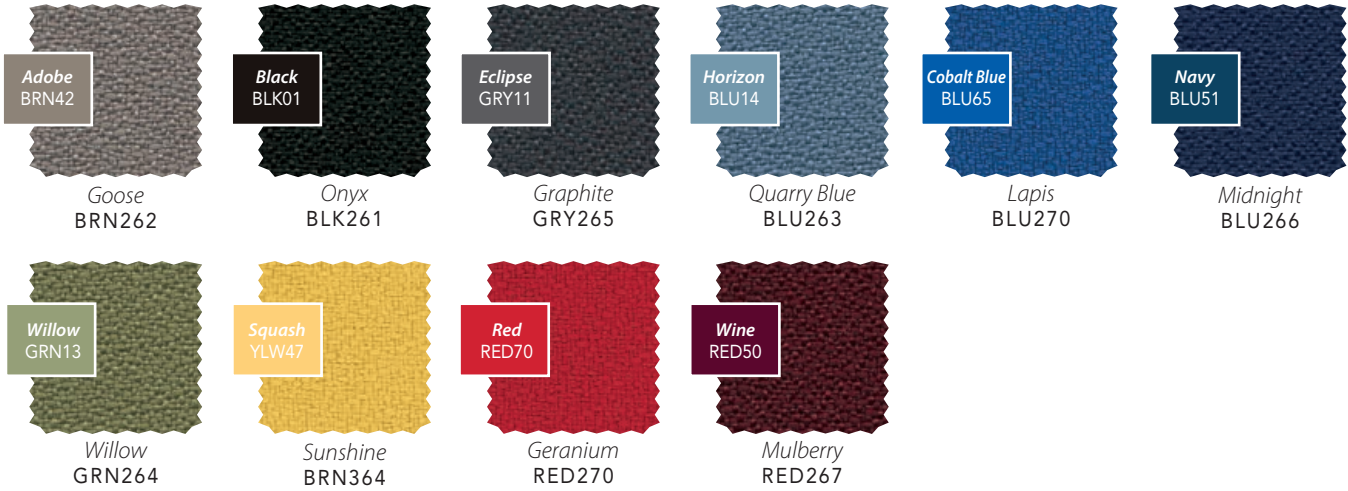
Black
BLK01

Shown here are standard edge treatments for 3/4" plywood, high-pressure laminate tops on Civitas table tops with a beveled edge.



PLASTIC / UPHOLSTERY COLORS FOR SAGE™ & ANALOGY® SERIES (EL) PADDED SEATS

Fabric and soft plastic colors for: Sage and Analogy (EL) Series



This fabric is made from 100% recycled polyester.
This fabric passes California Technical Information Bulletin 117, Section E.



The plastic/upholstery colors shown here are recommended pairings for selected Parison models. Customers can choose to match up other plastic and upholstery colors (minimums may apply). Virco's full selection of soft plastic colors are shown on page 3 of this catalog. Please contact your Virco representative or consult Virco's current Factory price list for more information.

PLASTIC / UPHOLSTERY COLORS FOR 9000 & 2000 SERIES PADDED SEATS

Fabric and soft plastic colors for: 9000 Series, 2000 Series



This fabric, except Onyx (BLK261) is made from 73% polyolefin and 27% polyester; Onyx fabric (BLK261) is made from 100% recycled polyester. This fabric passes California Technical Information Bulletin 117, Section E.



The plastic/upholstery colors shown here are recommended pairings for selected Parison models. Customers can choose to match up other plastic and upholstery colors (minimums may apply). Virco's full selection of soft plastic colors are shown on page 3 of this catalog. Please contact your Virco representative or consult Virco's current Factory price list for more information.

NOTE: Padded seats are only available on select models and sizes. Please contact your Virco Sales representative or consult Virco's price list for the availability on specific models.

PLASTIC / UPHOLSTERY COLORS FOR PARISON® SERIES

Soft Plastic Backs With Upholstered Padded Seats



This fabric is made from 100% recycled polyester.

This fabric passes California Technical Information Bulletin 117, Section E.

The plastic/upholstery colors shown here are recommended pairings for selected Parison models. Customers can choose to match up other plastic and upholstery colors (minimums may apply). Virco's full selection of soft plastic colors are shown on page 3 of this catalog. Please contact your Virco representative or consult Virco's current Factory price list for more information.

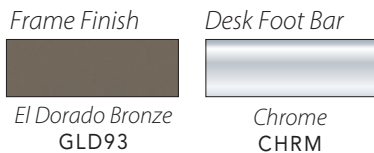


LAMINATE / EDGE, UPHOLSTERY AND STEP STOOL SURFACE COLORS FOR METONYMY®

Bench upholstery and Step Stool surface colors are only available with the designated laminate and edge finish colors in that column.

	Black BLK001	Grey GRY005	Atlantis BLU043	Fusion Maple BRN385	Carmel Sagawood WOD619	Looks Likatre WHT066	Asian Sand MPL008
DESK	Clear CLR	Smoke GRY22	Clear CLR	Clear CLR	Black BLK01	Smoke GRY22	Clear CLR
	Edge / Laminate	Edge / Laminate	Edge / Laminate	Edge / Laminate	Edge / Laminate	Edge / Laminate	Edge / Laminate
BENCH	Upholstery	Upholstery	Upholstery	Upholstery	Upholstery	Upholstery	Upholstery
STEP STOOL	Top Surface	Top Surface	Top Surface	Top Surface	Top Surface	Top Surface	Top Surface

These fabrics pass California Technical Information Bulletin 117, Section E.



UPHOLSTERY COLORS

In addition to the upholstery materials listed in this brochure, Virco maintains important and strategic relationships with fabric and vinyl mills around the U.S., and can assist you on specific or custom material request for your upholstered furniture needs. Call your Virco Sales Representative or Customer Service for more information at 800.448.4726.

Upholstery colors on this page are standard only on selected Virco models; when used on other models, minimum quantities and extended lead-times may apply. Please contact your Virco representative or consult Virco's current Factory price list for more information.

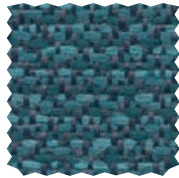
Fabric colors for 8900 Series Stack Chairs, Comfort Stacker™ and Folding Chairs



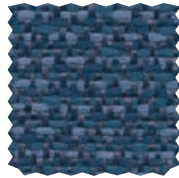
Sedona Loden
GRN203



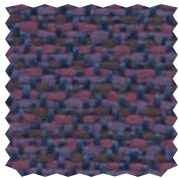
Sedona Wintergreen
GRN206



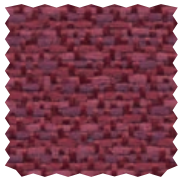
Sedona Ocean
BLU205



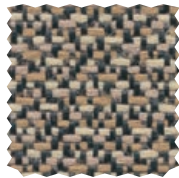
Sedona Sailor
BLU204



Sedona Passion
RED208



Sedona Ruby
RED201



Sedona Java
BRN202



Onyx
BLK261



This fabric, except Onyx fabric (BLK261) is made from 73% polyolefin and 27% polyester; Onyx fabric (BLK261) is made from 100% recycled polyester.

This fabric passes California Technical Information Bulletin 117, Section E.

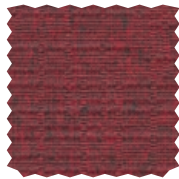
Vinyl colors for 8900 Series Stack Chairs and 168 Folding Chair



Contemporary Dark Blue
BLU262



Linen Black
BLK149



Linen Burgundy
RED140



Linen Grey
GRY142



Linen Slate Blue
BLU141



Linen Tan
BRN146



Select Black
BLK134



Select Brown
BRN136



Select Red
RED130

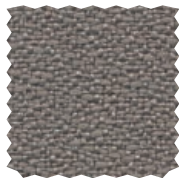


Select Silver Mist
GRY132

Contemporary, Linen and Select vinyl are made from poly vinyl chloride (PVC); Select vinyl is made from 100% olefin. Contemporary and Linen vinyl pass California Technical Information Bulletin 117, Section E.

Select vinyl is only available for use with models 168, 8917 and 8926.

Open House fabric colors for upholstered chairs



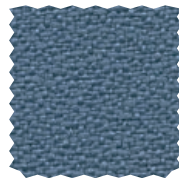
Goose
BRN262



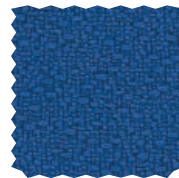
Onyx
BLK261



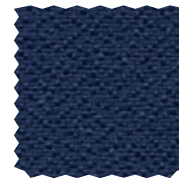
Graphite
GRY265



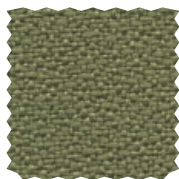
Quarry Blue
BLU263



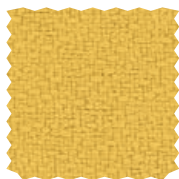
Lapis
BLU270



Midnight
BLU266



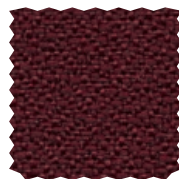
Willow
GRN264



Sunshine
BRN364



Geranium
RED270



Mulberry
RED267

This fabric is made from 100% recycled polyester.

This fabric passes California Technical Information Bulletin 117, Section E.

COLORS FOR PARAMETER® FABRIC PANELS

A full spectrum of panel fabric is available to help create a unified look throughout your surrounding space.

The fabric shown below is also available with select Virco models that offer upholstered seat options, further adding to the overall color coordination of your work environment.

This fabric is made from 100% recycled polyester and passes California Technical Information Bulletin 117, Section E.



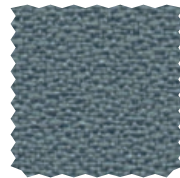
Goose
BRN262



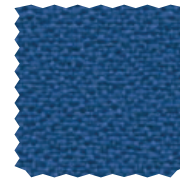
Onyx
BLK261



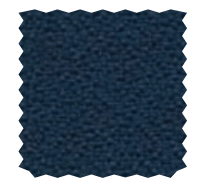
Graphite
GRY265



Quarry Blue
BLU263



Lapis
BLU270



Midnight
BLU266



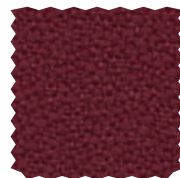
Willow
GRN264



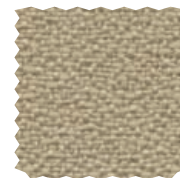
Sunshine
BRN364



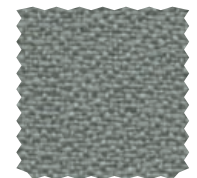
Geranium
RED270



Mulberry
RED267



Angora
BRN366



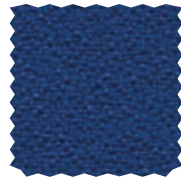
Asteroid
GRY366



Aubergine
PUR161



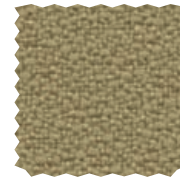
Birch
BRN362



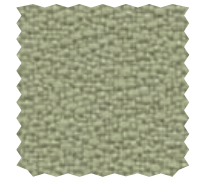
Cobalt
BLU271



Coffee Bean
BRN367



Cumin
BRN368



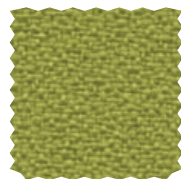
Eucalyptus
GRN266



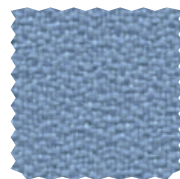
Fern
GRN146



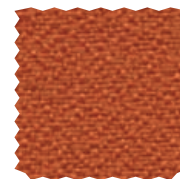
Fossil
BRN361



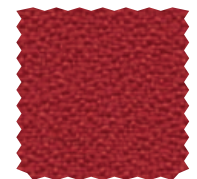
Green Apple
GRN267



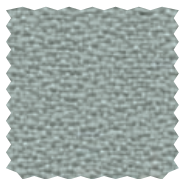
Pool
BLU142



Pumpkin
ORG223



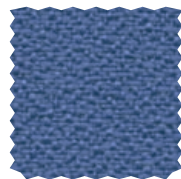
Red Delicious
RED272



Slate
GRY364



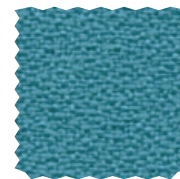
Straw
BRN365



Thistle
PUR162



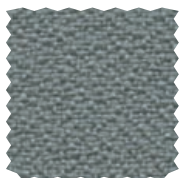
Vanilla
BRN363



Waterfall
BLU062



White*
WHT222



Wolf
GRY269

**White (WHT222) is not recommended for use as Upholstery*

HOW TO REQUEST COLOR SAMPLES

Customers may request individual color samples from this brochure by contacting their local sales representative or by calling Virco direct at:

800-448-4726



Proudly Designed, Manufactured And Assembled By American Workers

Since 1950, when we opened our doors in Southern California, Virco has been proud to design, manufacture and assemble our products in the U.S.

One of America's iconic brands, Virco is the country's largest manufacturer and supplier of furniture and equipment for K-12 schools. All manufacturing processes – from metal fabrication and woodworking to plastic injection molding, powder coating, and chrome plating – are done in-house at our two state-of-the-art facilities in Torrance, California, and Conway, Arkansas.



Holding To The Highest Standards For Over 70 Years

Virco proudly complies with all laws and governmental regulations affecting our products. Visit virco.com for information on warranties, awards, certifications, testing standards, and environmental initiatives.



Copyright 2022, Virco, all rights reserved. Virco®, Lunada®, Sure Edge®, Martest® 21, Parison®, Metonymy®, Analogy®, Plateau®, TEXT®, Civitas®, ZUMA®, Parameter® and Core-a-Gator® are registered trademarks at the U.S. Patent and Trademark Office. Sage™, Tetra™, Textameter™, Topaz™, ZUMAFrd™, Fortified Recycled Wood™ and Comfort Stacker™ are trademarks of Virco Mfg. Corporation. Virco has a continuous product improvement program and reserves the right to make changes in product design, construction, details and color combinations, and to discontinue any product without notice. Possession of this brochure does not constitute an offer to sell.

Virco Inc. • 2027 Harpers Way • Torrance, CA 90501 • 1-800-44-VIRCO • virco.com

